



Introduction to  
**Indonesia**  
*with emphasis on  
historical geography  
and archaeology*



**805-161 SOUTHEAST ASIAN CIVILIZATION**

**Asst. Prof. Steven Andrew Martin, PhD • Faculty of International Studies • Prince of Songkla University**



# Bali, Indonesia







**THE EMBASSY OF THE REPUBLIC OF INDONESIA  
BANGKOK, THAILAND**

This certificate is presented to:


**Steven A. Martin, Ph.D**

In appreciation to his participation

At the opening Ceremony of Indonesian Center and MOU Signing; Thai-Indonesian Local Products and  
Tourism Promotion; and Taste of the World program (International-Indonesian, Breakfast)

Prince of Songkla University, Phuket Campus

Bangkok, 17 November 2015

  
**Dr. Yunardi**

Education and Culture Attaché of the Embassy of the Republic of Indonesia  
to the Kingdom of Thailand



# Southeast Asian Civilization Indonesian Dance





# Indonesia in the ASEAN context





# Physical Geography of the ASEAN Region







# Indonesia

## Archipelagic state

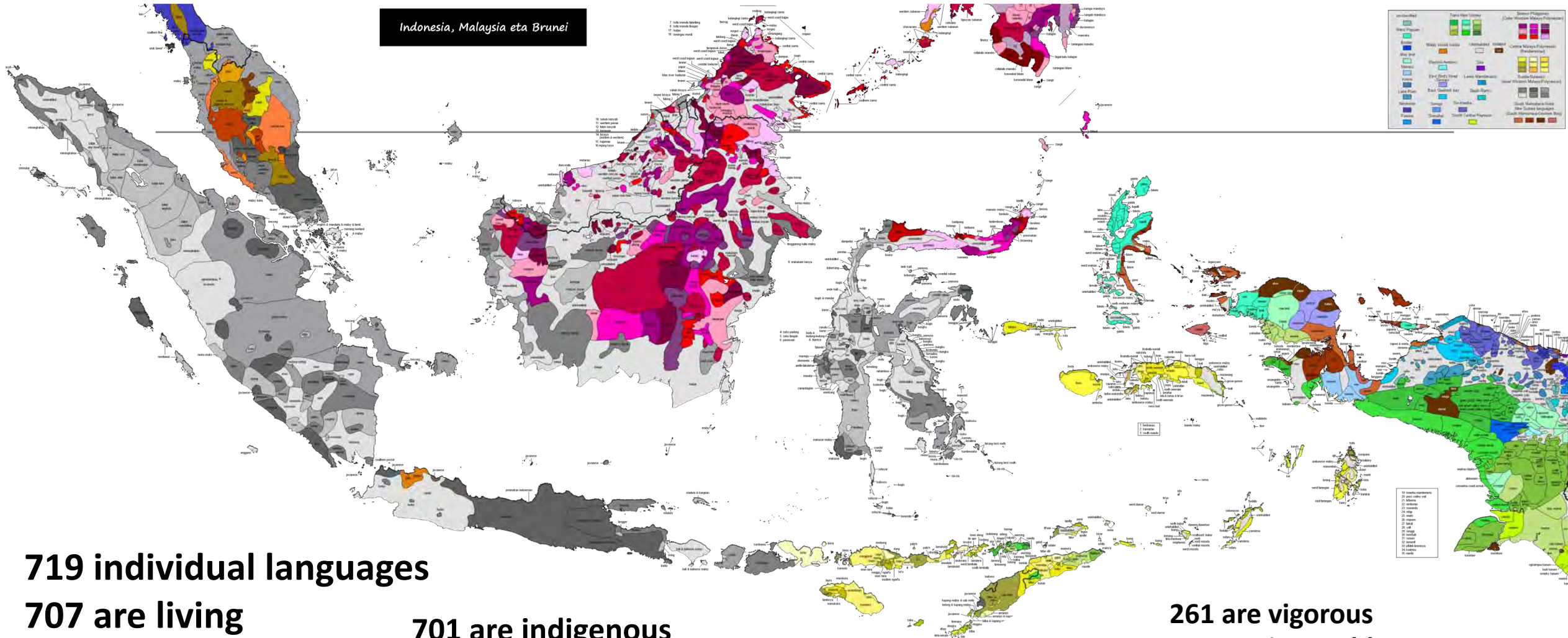
Java  
Borneo  
Sumatra  
Sulawesi  
New Guinea







# Languages of Indonesia





# Sumatra

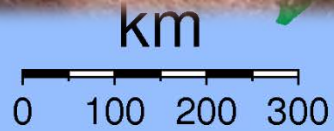
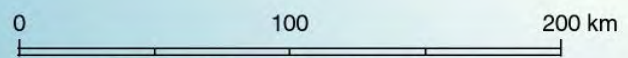
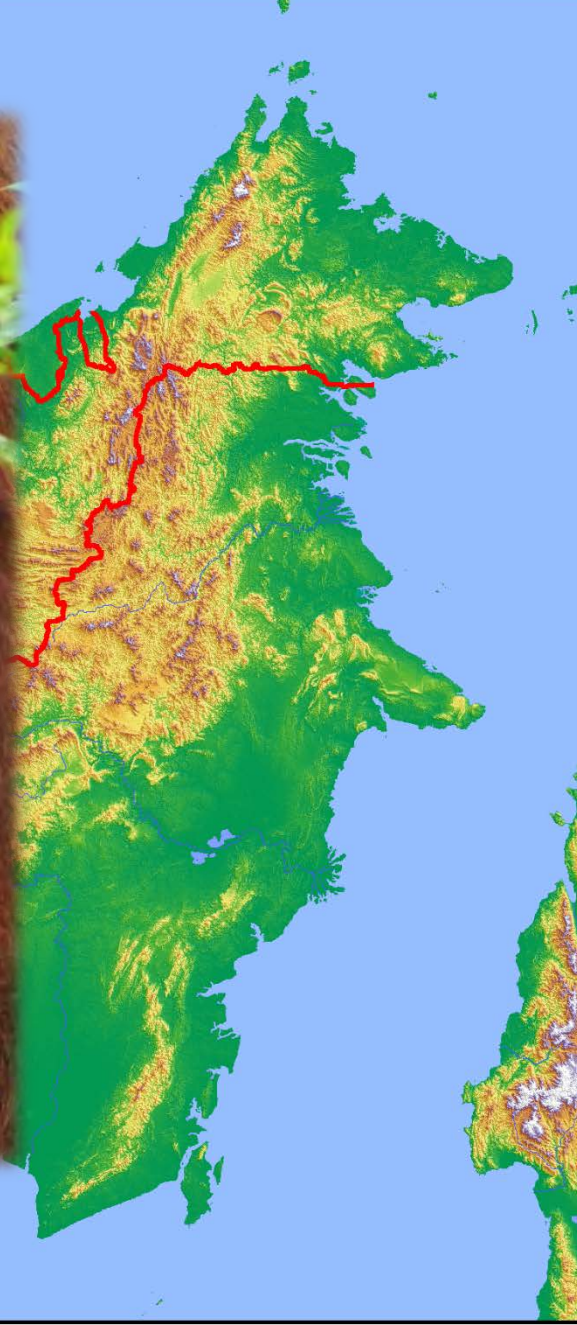
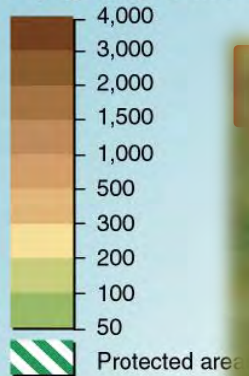






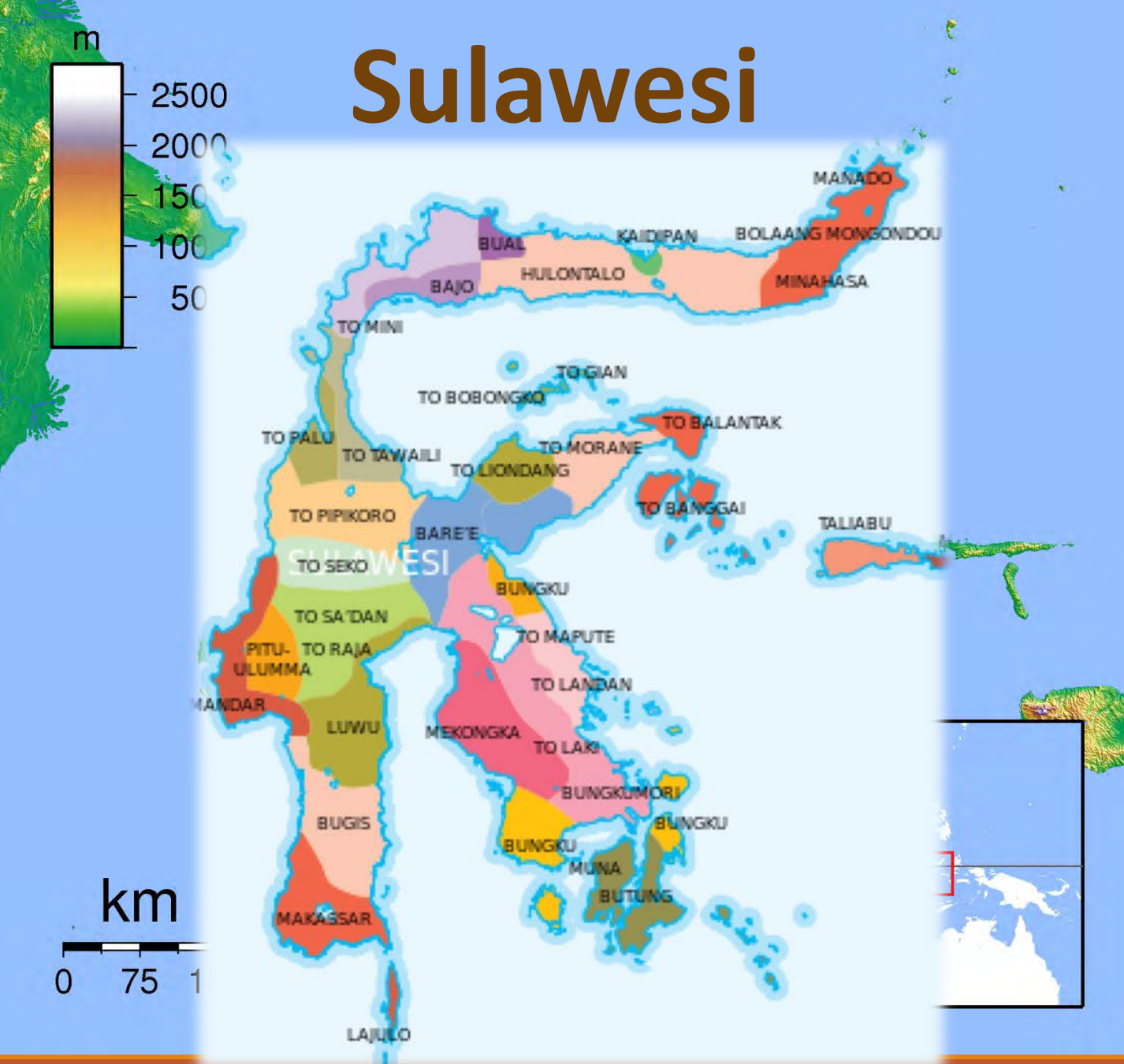


Topography in metres





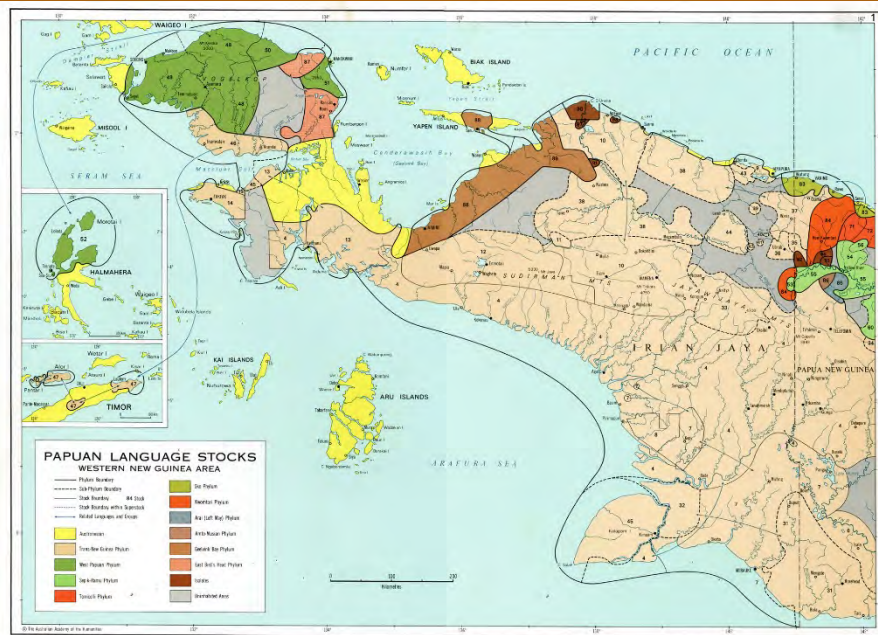
# Sulawesi





# Papua (New Guinea)

## West Papua







# Places and Videos

<https://www.youtube.com/user/TheIndonesiaTravel>

**New tourism policy in Indonesia is gearing to drive the industry to ne heights**

**LET'S WATCH 3 NEW SHORT VIDEOS...**

**Wonderful Indonesia: A Visual Journey through Lombok**

**Wonderful Indonesia: A Visual Journey through Wakatobi**

**Wonderful Indonesia: A Visual Journey through Banyuwangi**





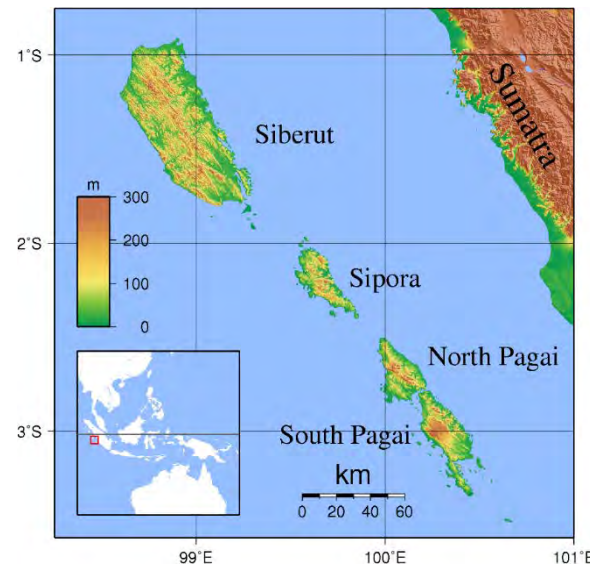
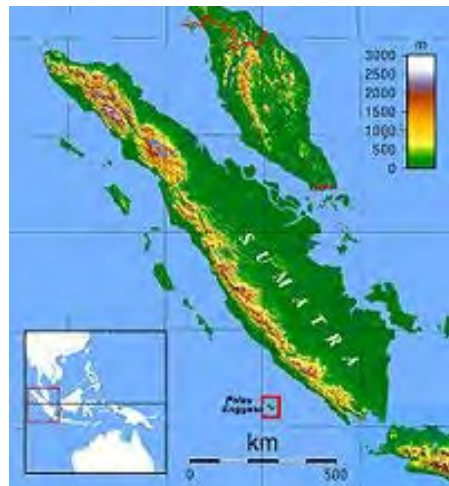


# Surfing & Surf Tourism in Indonesia

[https://www.youtube.com/watch?v=5TP\\_yJ9Qt-A](https://www.youtube.com/watch?v=5TP_yJ9Qt-A)



# Mentawai Islands



## Surf Aid

<http://www.surfaid.org/>

non-profit humanitarian organization whose aim is to improve the health, wellbeing and self-reliance of people living in isolated regions connected to us through surfing

**Mentawai Tattoo Revival:** [https://www.youtube.com/watch?v=Nd\\_MSm28gbg](https://www.youtube.com/watch?v=Nd_MSm28gbg)

**“Malaria Sucks”**

**“Sick Waves Healthy Villages”**

**Vimeo:** <http://www.surfaid.org/>

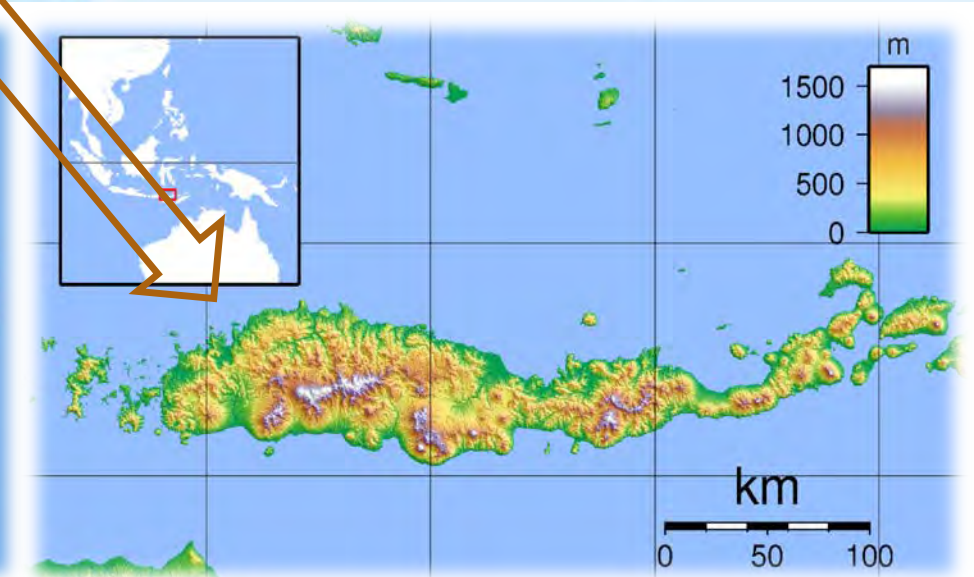




**SIBERUT**



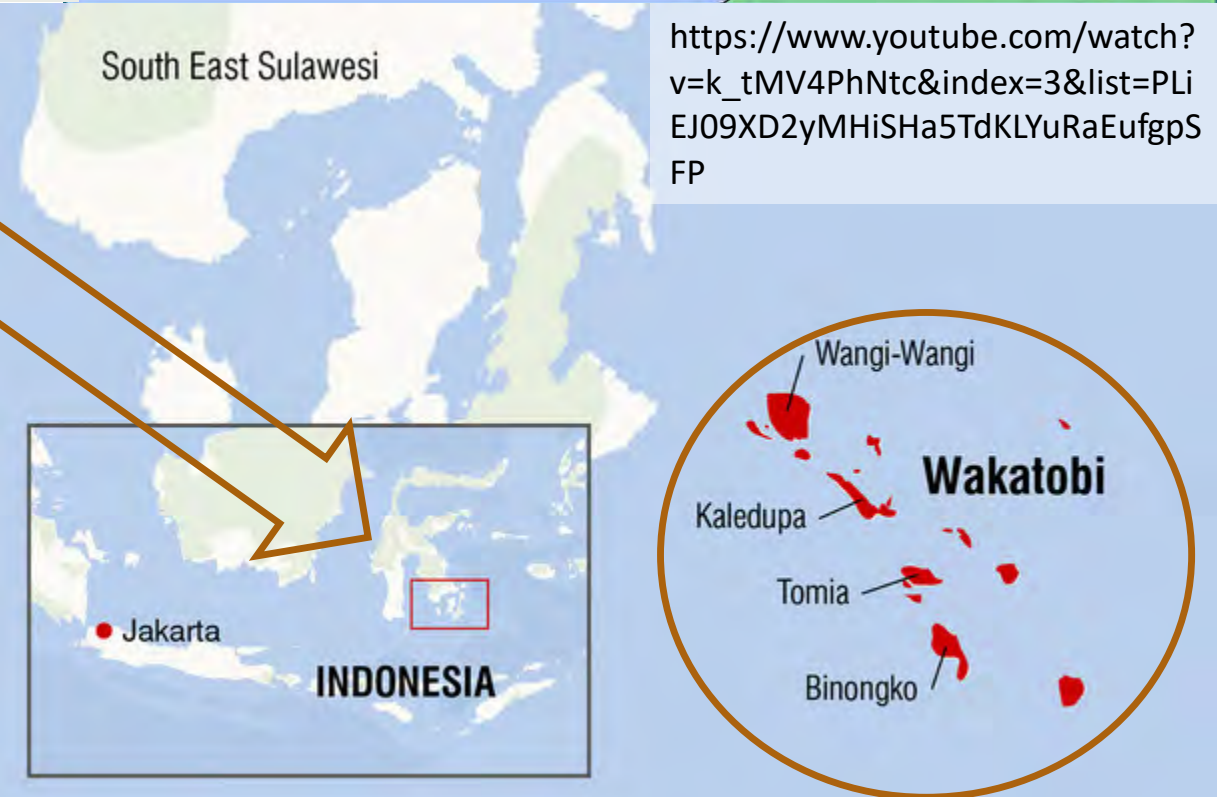
**BALI**



**FLORES**



# Banyuwang Wakatobi Lombok





# Indonesian Geo Factoids



## Contemporary Factoids Physical Geography

### Area (land)

1,811,569 sq km

### Coastline

**Total:** 54,716 km

### Land boundaries

**Total:** 2,958 km

**Border countries (3):** Timor-Leste 253 km,  
Malaysia 1,881 km, Papua New Guinea 824 km

### Natural resources

petroleum, tin, natural gas, nickel, timber,  
bauxite, copper, fertile soils, coal, gold, silver

### Climate

tropical; hot, humid; more moderate  
in highlands

### Natural hazards

occasional floods; severe droughts; tsunamis; earthquakes;  
volcanoes; forest fires

**volcanism:** Indonesia contains the most volcanoes of any  
country in the world - some 76 are historically active





# Major Volcanoes of Indonesia

(with eruptions since 1900 A. D.)



Indonesian  
Volcanoes

—  
“The Ring  
of Fire”



# Indonesian Geo Factoids



## Contemporary Factoids Human Geography

### Languages

Bahasa Indonesia (official, modified form of Malay), English, Dutch, local dialects (of which the most widely spoken is Javanese)  
note: more than 700 languages are used in Indonesia

### Ethnic Groups

Javanese 40.1%, Sundanese 15.5%, Malay 3.7%, Batak 3.6%, Madurese 3%, Betawi 2.9%, Minangkabau 2.7%, Buginese 2.7%, Bantenese 2%, Banjarese 1.7%, Balinese 1.7%, Acehnese 1.4%, Dayak 1.4%, Sasak 1.3%, Chinese 1.2%, other 15%

### Literacy (2015 est.)

(age 15 and over can read and write)  
total population: 93.9%  
male: 96.3%  
female: 91.5% (2015 est.)

### Population (2016 est.)

258,316,051

### Urbanization

53.7% of total population (2015)

### Religion

Muslim 87.2%,  
Christian 7%, Roman Catholic 2.9%, Hindu 1.7%, other 0.9%  
(includes Buddhist and Confucian),  
unspecified 0.4%





Population of Indonesia





# Religious Majorities in Indonesia by Province



# Indonesia Religions Map





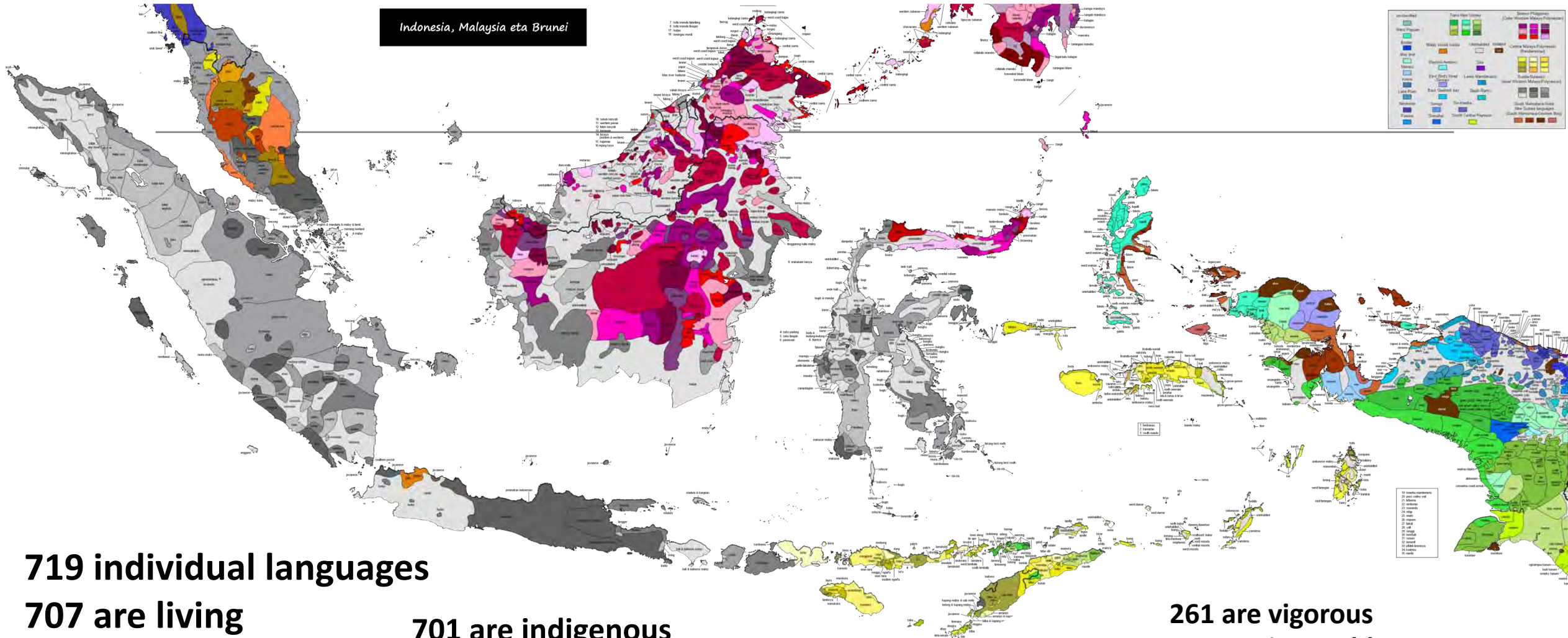
# Ethnic Groups in Indonesia

Please Choose One for Your  
Final Paper





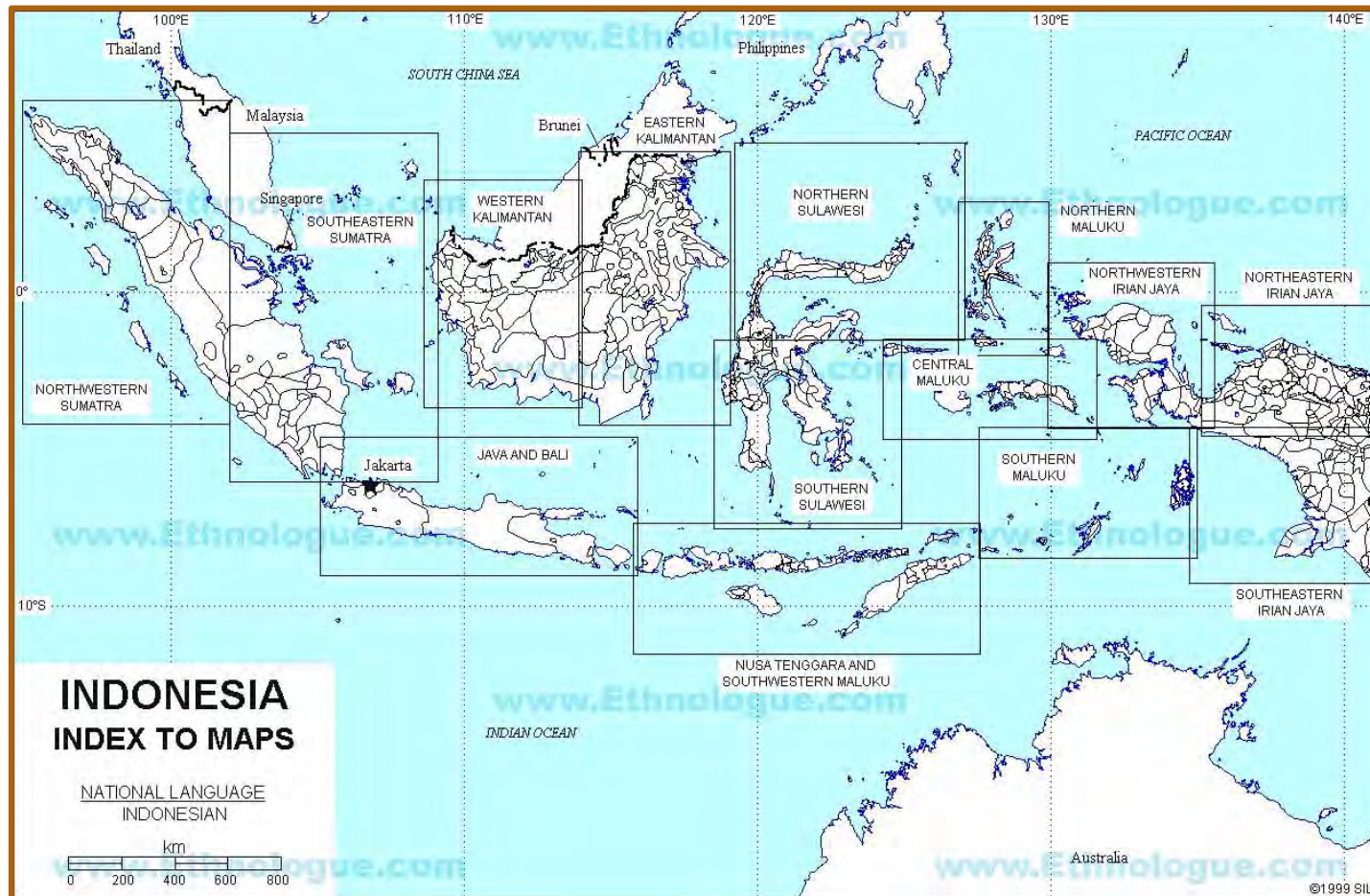
# Languages of Indonesia





[www.Ethnologue.com](http://www.Ethnologue.com)

Please Choose One  
Ethnic Group  
for Your Final Paper



Explore the  
many Ethno-  
linguistic  
Groups of  
Indonesia at  
[Ethnologue.com](http://Ethnologue.com)

<https://www.ethnologue.com/country/ID>



# Dani people



**Central highlands of Western New Guinea**

**Total population:** Approximately 25,000

**Region:** Papua, Indonesian

**Languages:** Dani languages

**Religion:** Protestant Christian, Islam, Animism, Dynamism (metaphysics), Totemism

**Related ethnic groups:** Damal people, Yali people, Lani people, Moni people





# Bajau

The **Baju** of Indonesia are an **Austronesian-speaking** and highly mobile maritime people group found throughout the **coastal areas of Sulawesi, Maluku, Kalimantan, Sumatera and East Nusa Tenggara.**

<https://www.youtube.com/watch?v=GHe5l4dnrw4>





# Ethnic Groups in Indonesia

## The Dyak of Kalimantan Borneo

Approximately  
3 million people  
in Indonesia  
Including the  
IBAN



DYAKS IN THEIR WAR DRESS.

Kelingai Iban [Tattoo Documentary]

<https://www.youtube.com/watch?v=WlWXnZNn3u8>



# The Toraja of Sulawesi



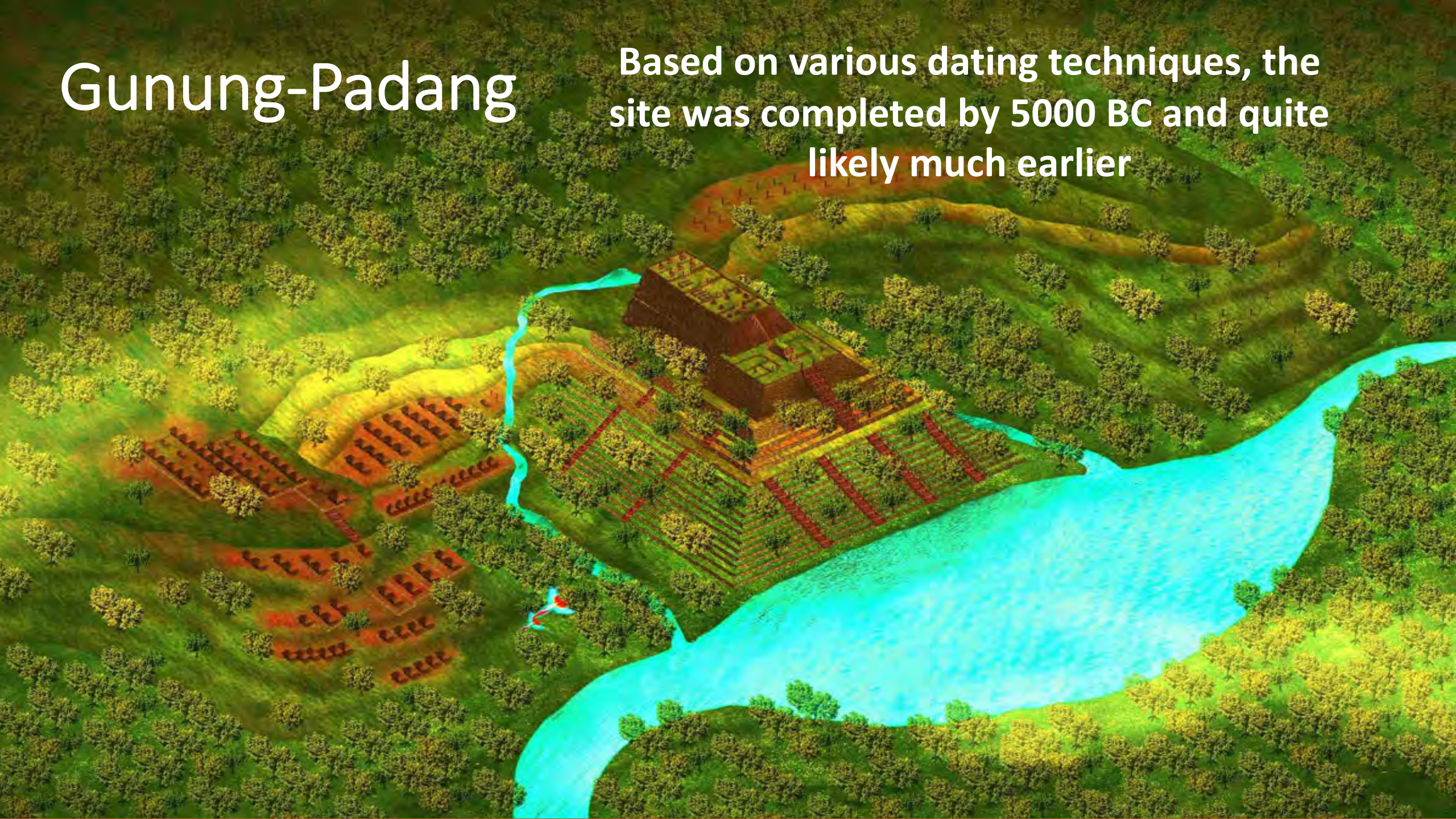
National Geographic  
“Living With Dead  
Bodies for Weeks or  
Years”

[https://www.youtube.com/watch?v=hCKDsJLt\\_qU&t=42s](https://www.youtube.com/watch?v=hCKDsJLt_qU&t=42s)



# Gunung-Padang

Based on various dating techniques, the site was completed by 5000 BC and quite likely much earlier





# Gunung Padang Megalithic Site



Largest megalithic site in Southeastern Asia

Carbon dating suggest it is 'extraordinarily' old (5,000 BP?)

West Java Province of Indonesia (50 km southwest of the city of Cianjur)





Gunung Padang Megalithic Site





# Gunung Padang Megalithic Site

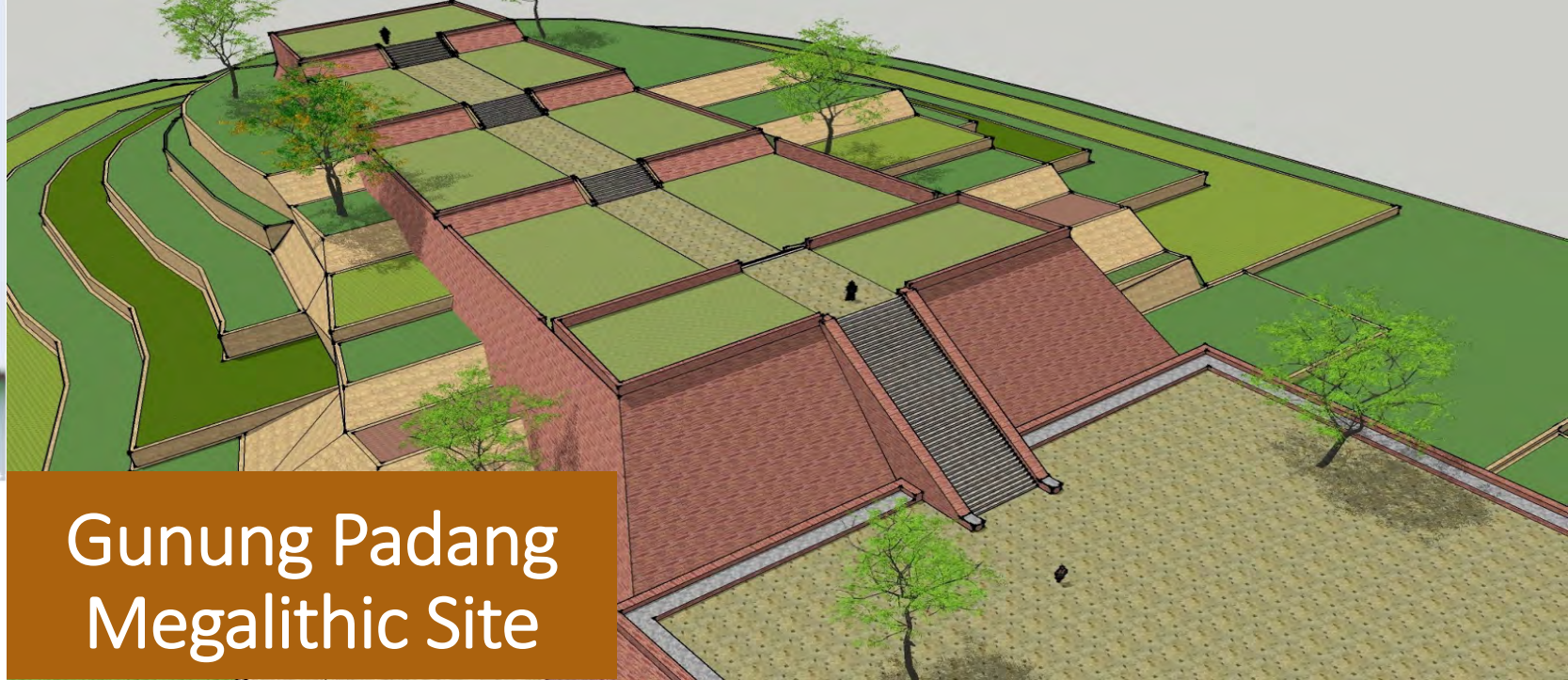


## Situs Gunung Padang, Indonesia Kuno yang Mencengangkan

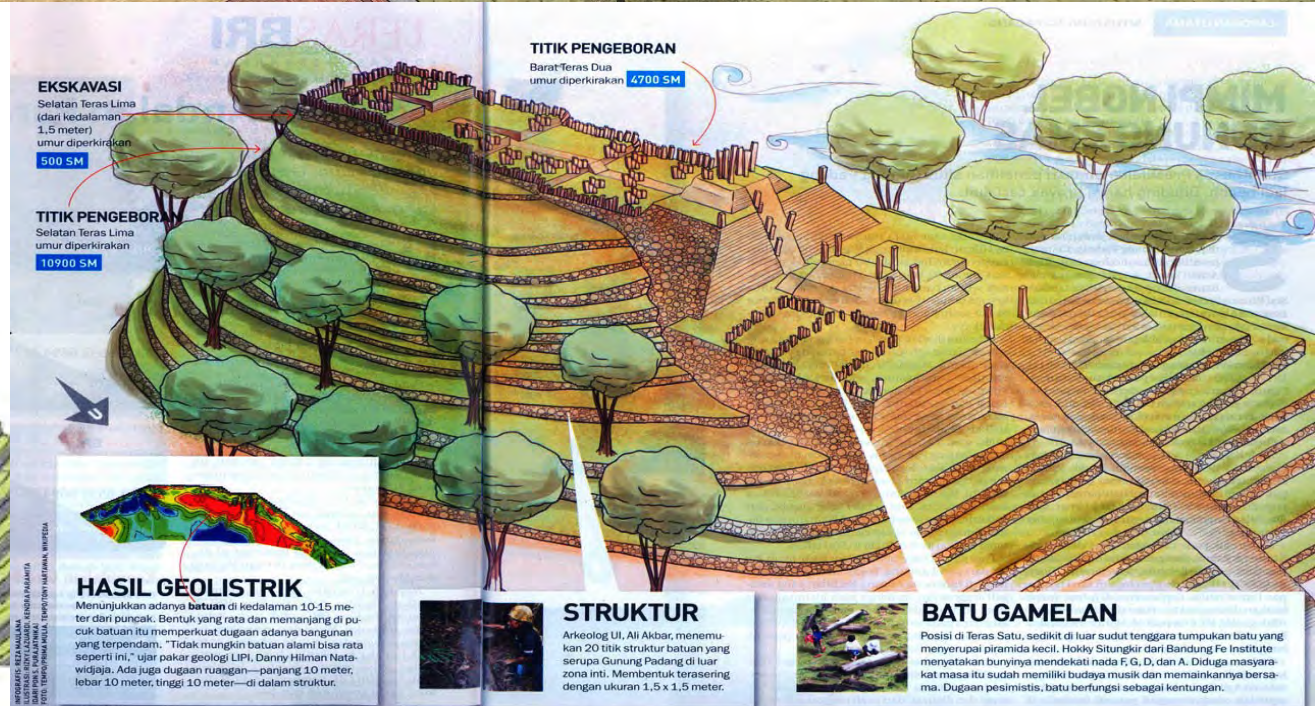
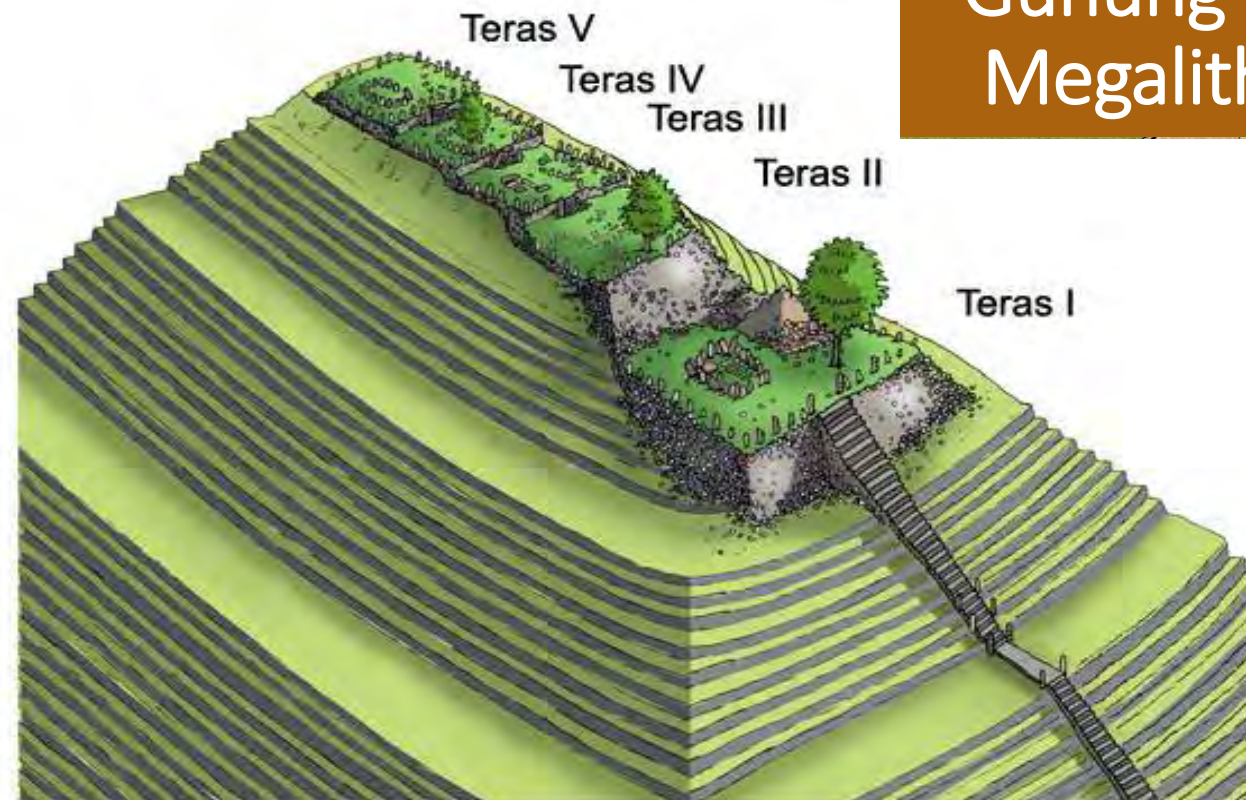
Tim dari Masyarakat Arkeologi Indonesia (MAI) Minggu (16/5) kembali menemukan artefak berupa makam kuno di situs Gunung Padang, Cijeruk, Jawa Barat. Penemuan artefak ini kembali memperkuat dugaan situs Gunung Padang yang disebut-sebut sebagai situs peradaban tertua di dunia.







# Gunung Padang Megalithic Site





# BOROBUDUR

An aerial photograph of the Borobudur temple complex in Magelang, Central Java, Indonesia. The temple is a large, multi-tiered structure made of dark stone, featuring a central stupa and numerous smaller stupas. It is surrounded by lush green forests and a clear sky. The temple's architecture is intricate, with many levels of terraces and a complex system of stairs. The surrounding landscape is a mix of dense forest and open areas, with a few small buildings visible in the distance.

9th-century Mahayana Buddhist temple in Magelang, Central Java, Indonesia



# BOROBUDUR



9th-century Mahayana Buddhist temple in Magelang, Central Java, Indonesia



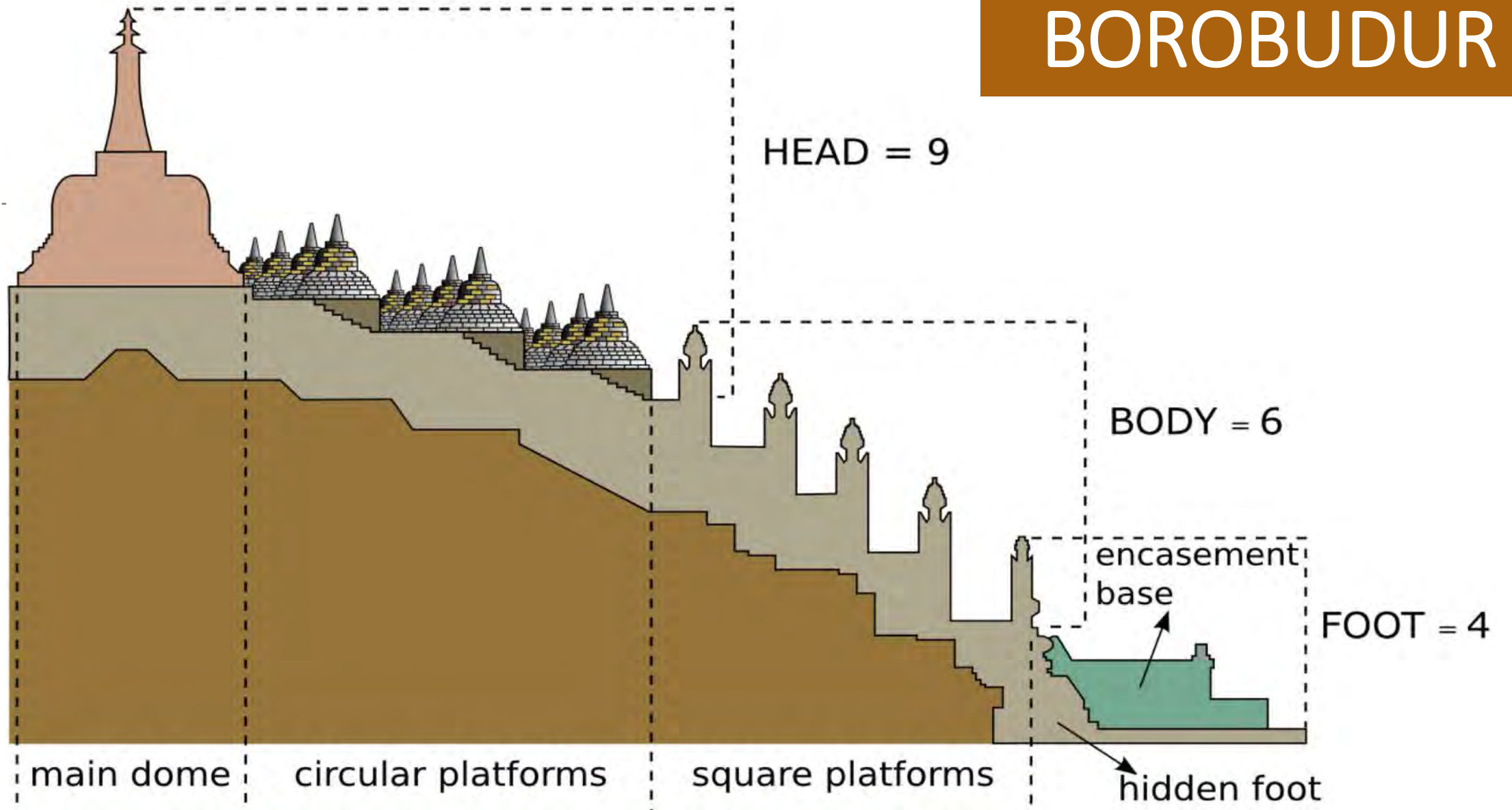
# BOROBUDUR



*Sam Luv*



# BOROBUDUR





# Prambanan



9<sup>th</sup> Century Hind Temple, Central Java





Early construction c. 850 CE

Abandoned in c. 930 CE

Collapsed during a major  
earthquake c. 1500+

# Prambanan

## Hindu temple compound

### Central Java



# Srivijaya

## Kadatuan Sriwijaya

### 650 CE–1377 CE

A dominant city-state based on the island of Sumatra, Indonesia

An important center for the expansion of Buddhism from the 8th to the 12th century

Deeply influenced Southeast Asia





# Srivijaya Empire

8th century

The states in Sumatra and Malay Peninsula were fell under Srivijayan domination

Malay polities in Sumatra and Malay Peninsula



Srivijaya Archaeological Park





# Majapahit Empire 1293–1527

**Capital:** Majapahit, Wilwatikta (modern Trowulan)  
**Languages:** Old Javanese (main), Sanskrit (religious)  
**Religion:** Hinduism, Buddhism, Kejawen, Animism  
**Government:** Monarchy

An empire based on the island of Java

Peaked during the era of Hayam Wuruk

Reign from 1350 to 1389

Marked by conquest which extended through Southeast Asia





# Colonia I Period Maps

## Java Island

Year?  
Research and  
Find Out!





The Portuguese Colonial Dominions  
in India and the Malay Archipelago, 1498—1650.

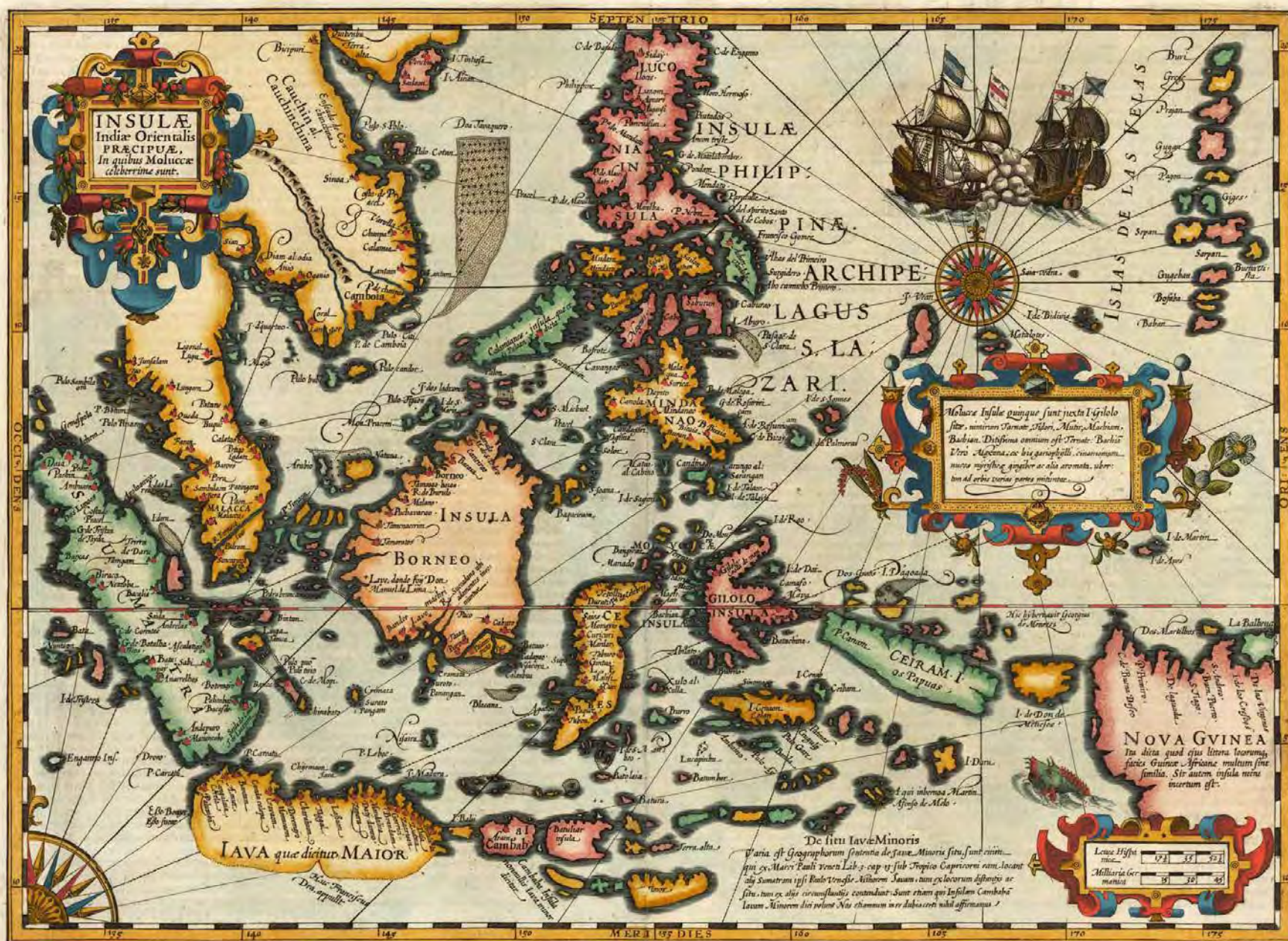




# 1855 East Indies

(Colton Map)





1619  
Amsterdam  
(French text  
edition)



# Take a Break – Class Discussion

---



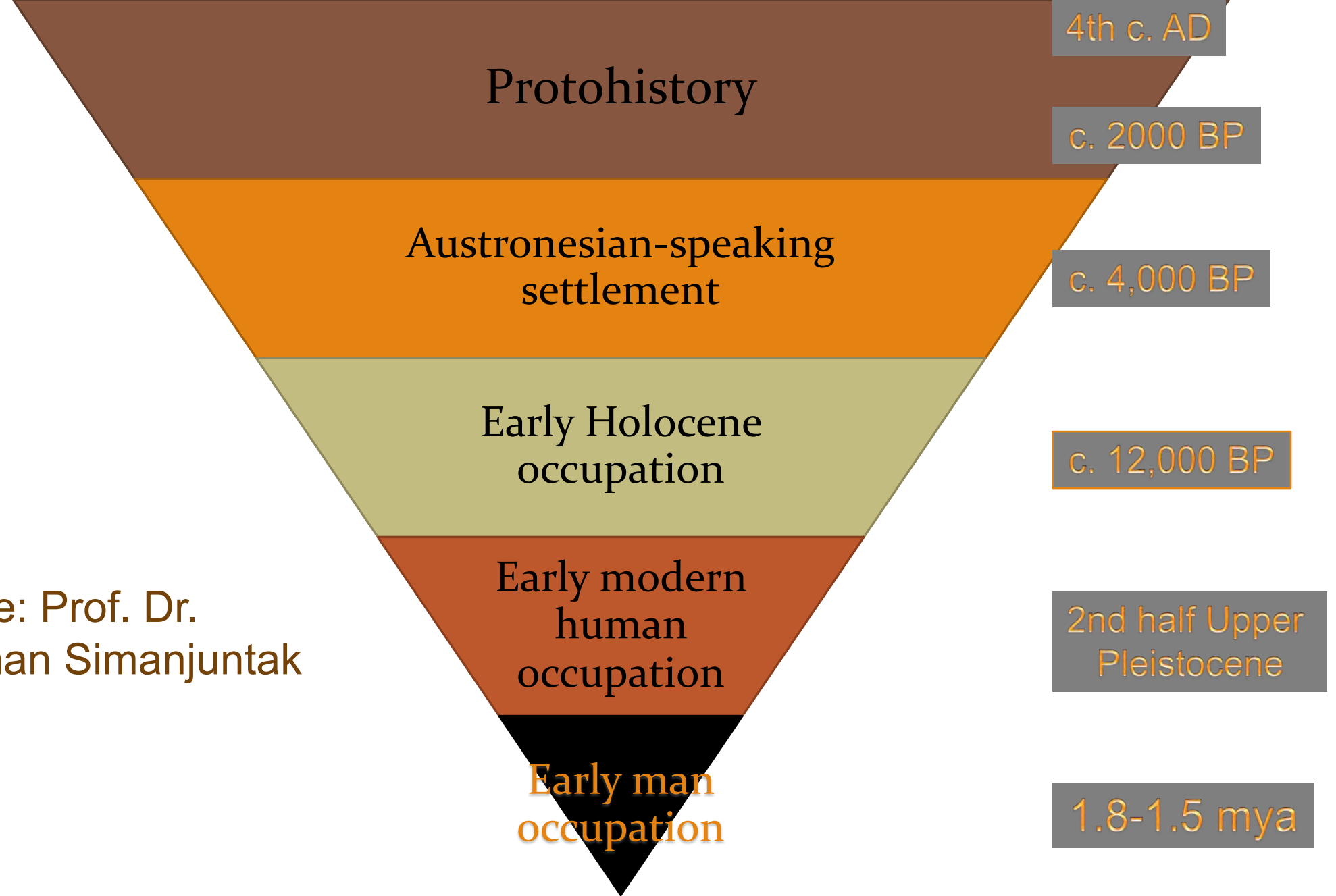


# Part II – Prehistory and the works of Truman Simanjuntak

- Prof. Dr. Harry Truman Simanjuntak is an archaeologist in the field of prehistory.
- He is famous for having served in various archaeological researches
- Discovery of rock paintings at the Tiger Cave Archaeological Site







Source: Prof. Dr.  
Harry Truman Simanjuntak



# EARLY MAN OCCUPATION

>1.5 mya – Upper Pleistocene?

---

Occupation area: Java and then Flores

Hunting-gathering subsistence

River oriented occupation

Temporary stations along the river bank

Core and flake tools





# The first colonization: when?

Perning, East Java:

$1.9 \pm 0.5$  mya (Jacob & Curtis 1971)

$1.81 \pm 0.04$  mya (Swisher *et al* 1994).

Sangiran, Central Java:

$1.6 \pm 0.04$  mya (Jacob & Curtis 1971)

$1.66 \pm 0.04$  mya (Swisher *et al* 1994)

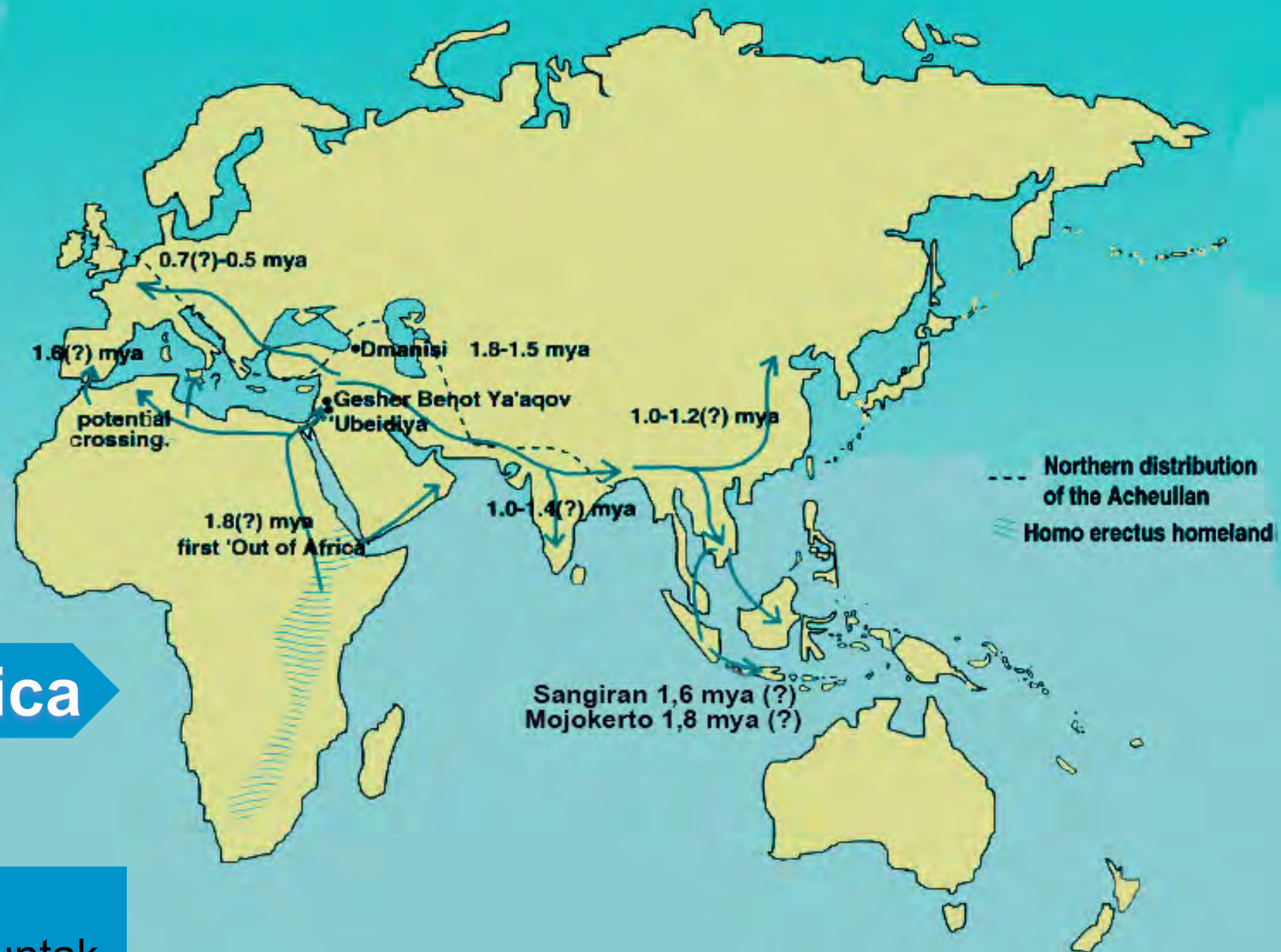
$\pm 1.64$ - $1.67$  mya: Kalibeng-Pucangan (Sémah 2000)

$1.66 \pm 0.04$  mya: Lowest Pucangan: (Widiasmoro 2001).





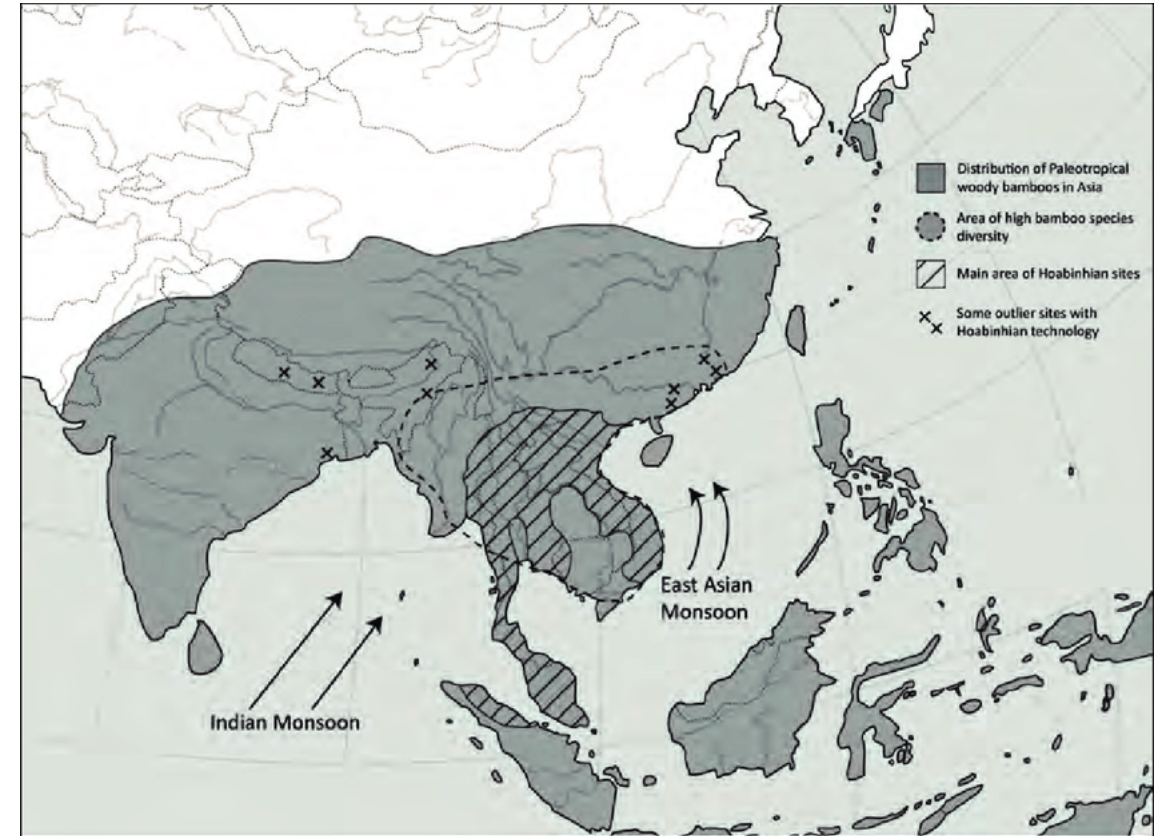
# Out of Africa





# Hoabinhian

## East coast of north Sumatra-Aceh



TANAKAN CAVE  
NORTH THAILAND



HOABINH  
NORTH VIETNAM



GUA PANDAN  
SOUTH SUMATRA

UNIFACES-SUMATRALITHES

Extent of Hoabinhian technological tradition relative to distribution



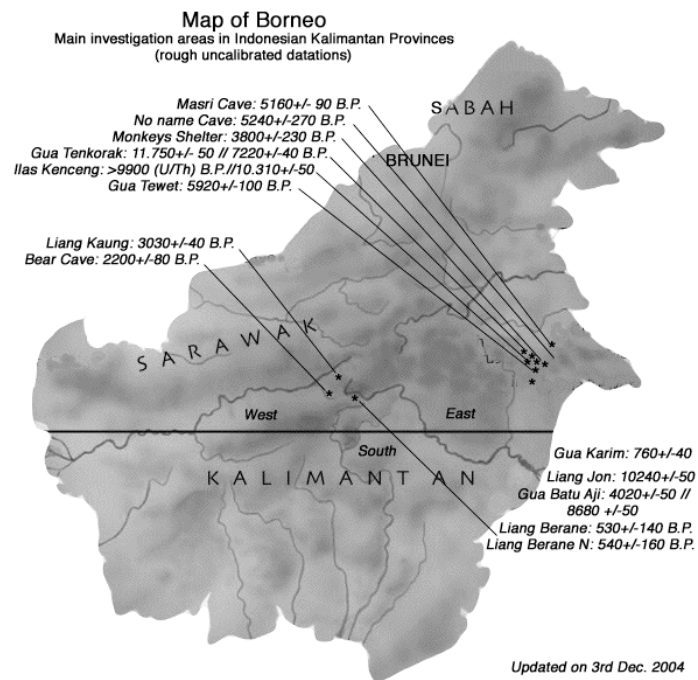
Source: Truman Simanjuntak



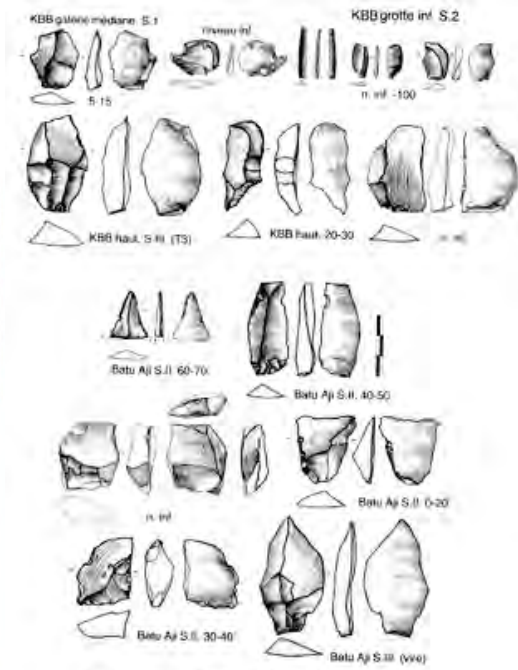
Karang Pelaluan Cave



Source: Truman Simanjuntak



# Kalimantan



Different samples and edges of "kutai" flakes  
©J. Espagnac



Source: Truman Simanjuntak

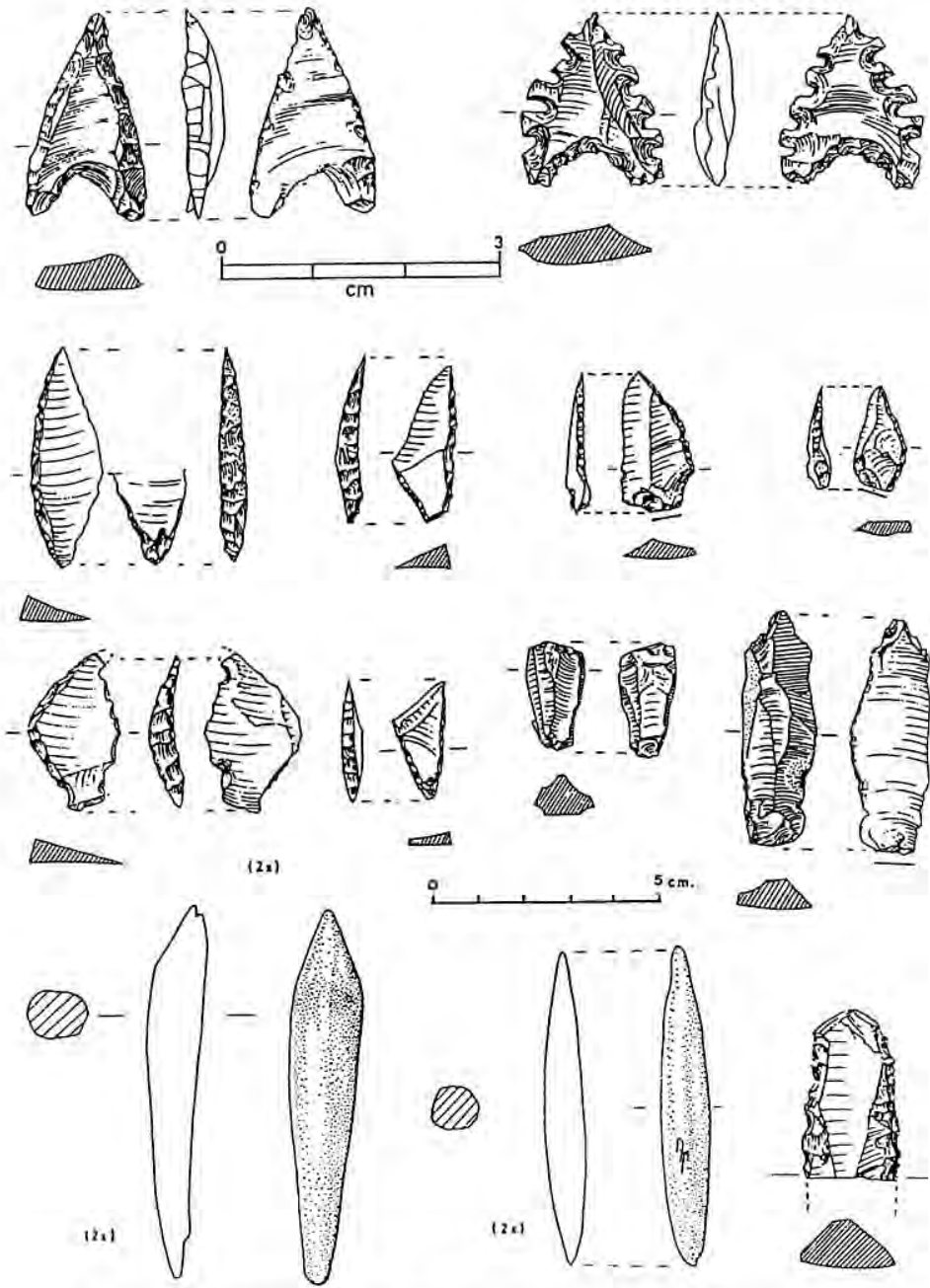
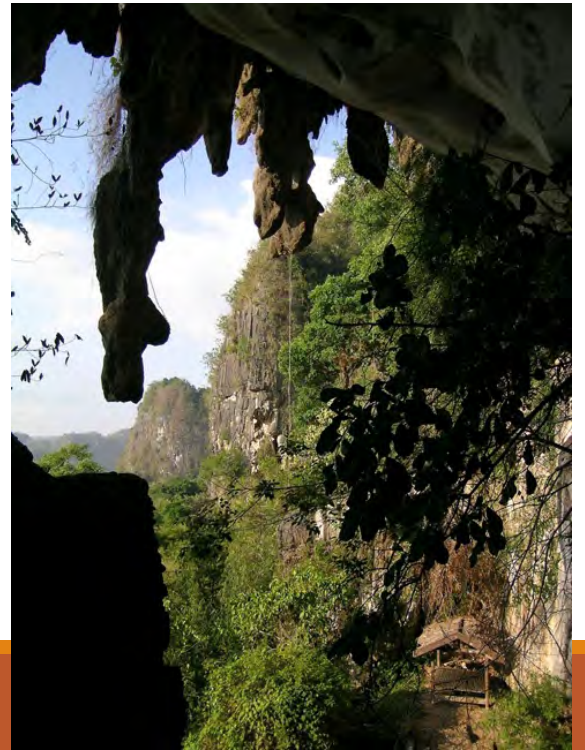


Fig. 4 - Outillage toalien (lithique et osseux) de Ulu Leang I, Sulawesi (d'après Glover, 1977)



Sulawesi





# Austronesian-speaking people settlement c. 4000-2000 BP

---



Cave and then open air settlements

Mastering seafaring technology

Practicing domestication

Different innovations: pottery, polishing technic, weaving, etc

Development of religious concept



## The geographical distribution of the Austronesian-speaking people



Source: Truman Simanjuntak



# Minanga Sipakko site (c.3500-2000 BP)



Red slip  
Plain and decorated  
Coarse and big pots



Source: Truman Simanjuntak



# Take a Break – Class Discussion

---

