

Ban Chiang Archaeological Site



Archaeologist.

Professor Chin Yudee was born on February 24, 1912, at Wang Mai Khon, Sawankhalok District, Sukhothai, Thailand. Professor Chin Yudee was the son of Mr. Chao and Mrs. Chae Um Noi and Professor Chin Yudee passed away in 1986.



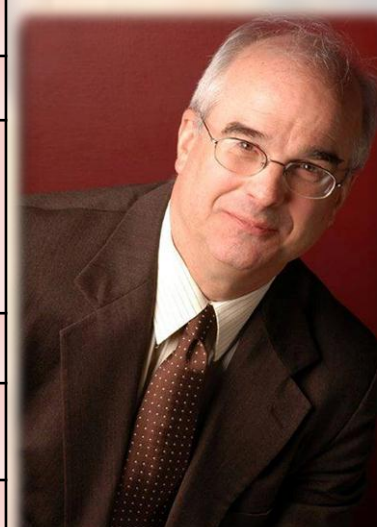
Location and physical appearance.

Ban Chiang Archaeological Site is located in Ban Chiang, Nong Han, Udon Thani, Thailand. It is located about 60 km. east of the province, situated on a high-ridge mound along the east-west.

Education		
Year	Institute	Qualification
1962 - 1963	Chanthaburi Women's School	Primary Grade
1921 - 1928	Chanthaburi Provincial Boarding School	Grade 6
1929 - 1930	Suan Kularb School	Grade 8
1931 - 1935	Self-study High school	Diploma
1938 - 1948	Thammasat University	Politics Bachelor of Arts (BA)
1953 - 1954	Received scholarships from the United Nations Educational, Scientific and Cultural Organization to study and train prehistoric archeology. And excavation in India. Including study tours to preserve cultural treasures in Cambodia, Vietnam, India, France, England, Belgium and Netherlands.	
1955	He was elected to the Society of Ancient Biologists, India.	
1974	He was awarded a degree of Doctor of Arts from Silpakorn University.	
1984	He was awarded the degree of Sociology. And an honorary anthropologist from Thammasat University.	

History of Ban Chiang.

Ban Chiang is considered the most important prehistoric settlement so far discovered in South-East Asia. It marks an important stage in human cultural, social and technological evolution. The site presents the earliest evidence of farming animals in the region and of the manufacture and use of metals.



Professor Stephen Young

Chronology table		
Date	Event	Comment
1960	Site first discovered.	An inhabitant at Ban Chiang finds pottery.
1966	Stephen Young an American social study student kept a pottery for give to Professor Chin Yudee an archaeological expert from the Department of Arts.	Analysis and concluded that in the prehistoric neolithic period.
1967	The Department of Arts conducted a earnest excavation and sent antiquities to the age by using the Thermoplastic Sense (C-15) at the Pennsylvania university of United States of America.	Discovered that these antiquities about 5600 years ago.
1987	Museum erected on the site.	Ban Chiang Museum has a living proof of life and culture of prehistoric.

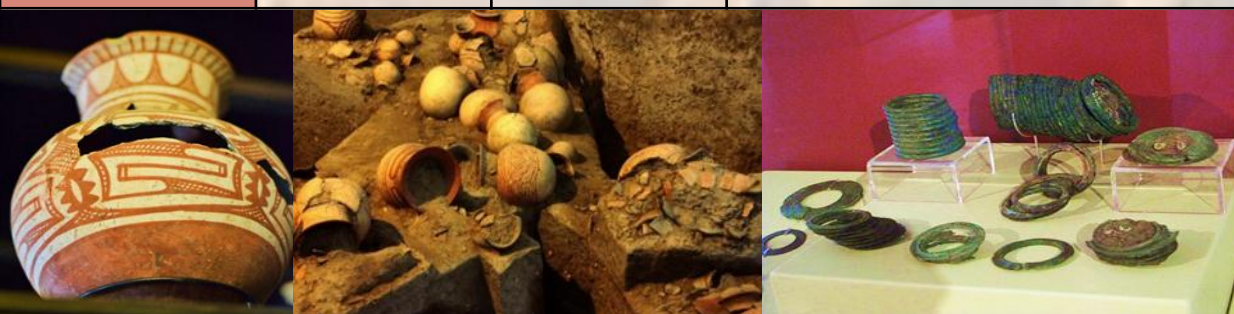


World Heritage

World Heritage Site.

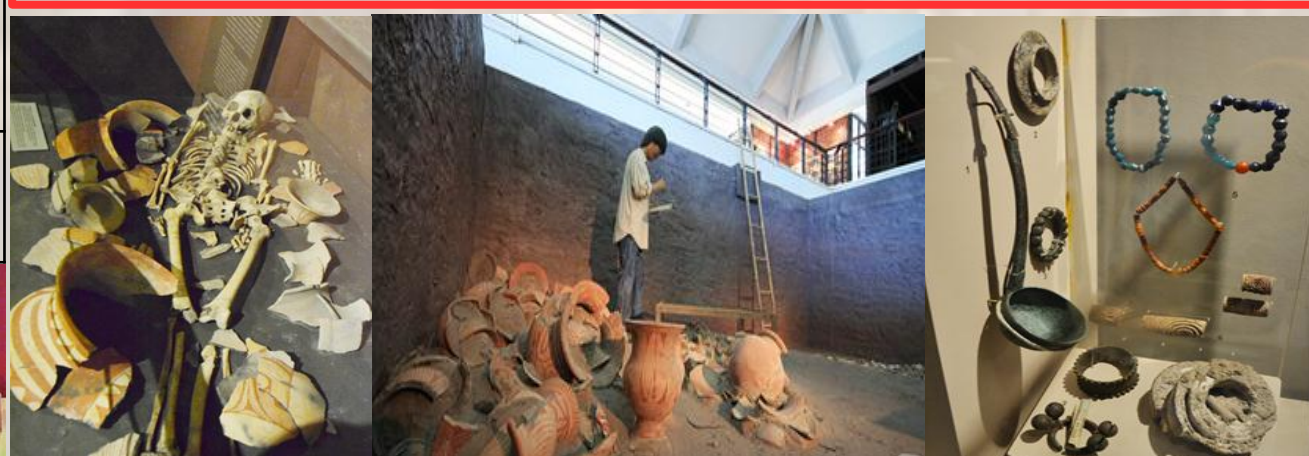
Ban Chiang Archaeological Site is an important phenomenon of prehistoric civilization that is most prominent in Southeast Asia. It represents the evolution of culture, society and technology that has flourished for more than 5,000 years in the period between 3,600 BC to 200 BCE. It was registered in the World Heritage List of the World Heritage Convention in 1992 with value and prominence in accordance with the third criterion "to bear a unique or at least exceptional testimony of the cultural tradition or civilization which is living or which has disappeared"

Materials found at the Ban Chiang			
Discover	Period	Era	Description
Pottery	5,000 years	Neolithic Age	People of Ban Chiang are known to make pottery in a gray container made of scratches, strips and polishes.
Bronze	4,500 - 4,000 years	Bronze Age	People of Ban Chiang used to make bronze tools and accessories in the early stages and later use iron but still use the bronze, include spear blade, arrow head, and bracelet.
Human skeleton	5,000 years	Neolithic Age	Ban Chiang was discovered as a prehistory and prehistoric burial ground.
Animal skeleton	3,000 years	Bronze Age	Dog skeleton in Ban Chiang culture with the human skeleton metal.



Ban Chiang National Museum.

Ban Chiang National Museum presents the prehistoric human way of life. It is also a tourist attraction to be aware of life in prehistoric history dating back over 5,000 years. The traces of humanity in the past will show the developed culture in the knowledge or ability, such as tools to live and the creation of human society for a long time.



References

Phayao Khemnak. (2011). The Influence of Stylistic Attributes of Ban Chiang Arts in Designs. *Veridian E-Journal, Silpakorn University*, 4,16-35.

Rasmi Shoocongdej. (2014). *100 Years of Professor Shin Yew - Academic and Honor*. Retrieved October 10, 2017, from Contact Information Ramkhamhaeng university Web site:

<http://www.info.ru.ac.th/province/Sukhotai/Chin.htm>

Name: Phaliwan Noila

Nickname: Prim

805-161 Southeast Asian Civilization