

Maps of South Africa

www.StevenAndrewMartin.com

Education and Learning

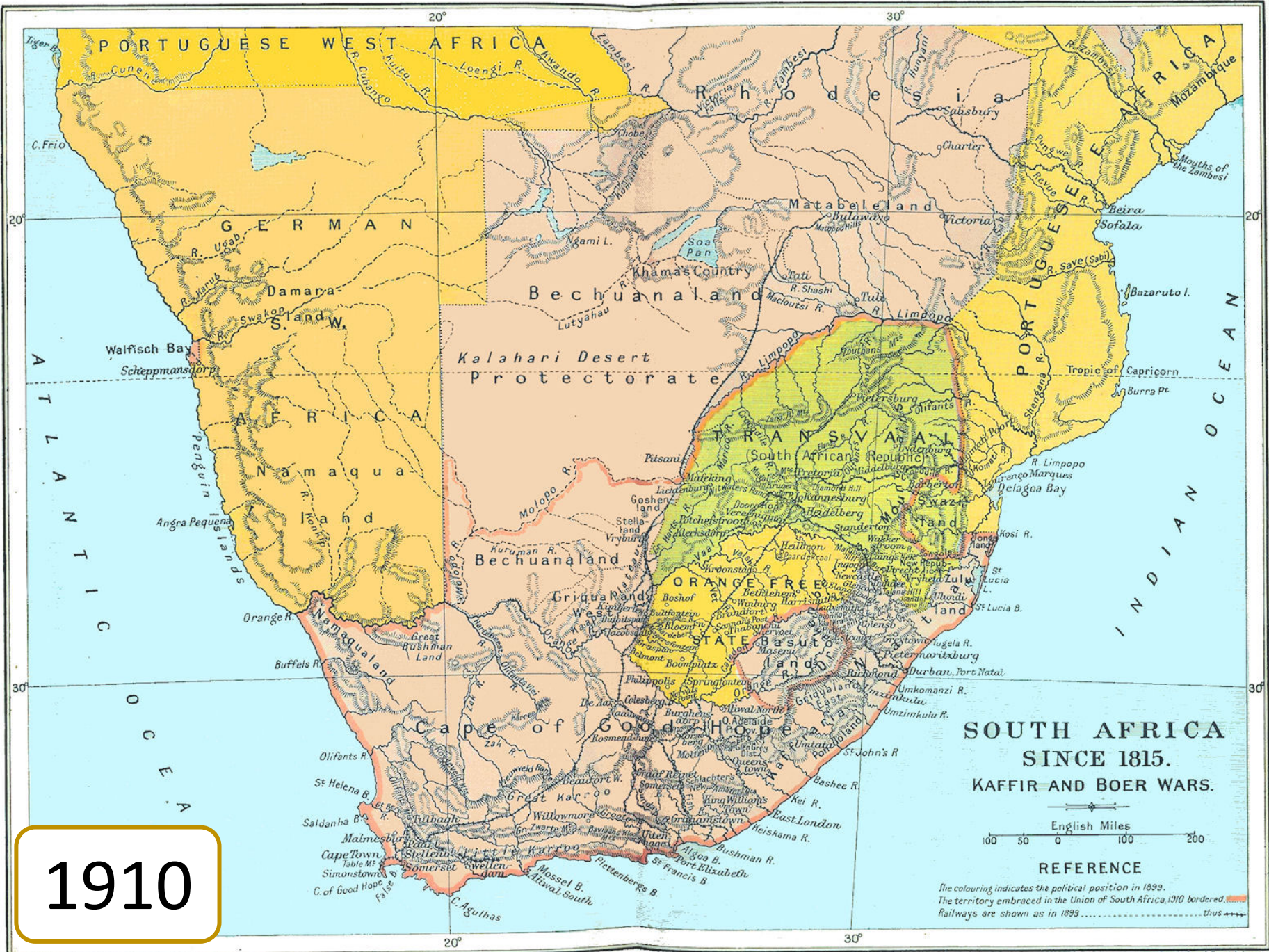
Intended for educational purposes only

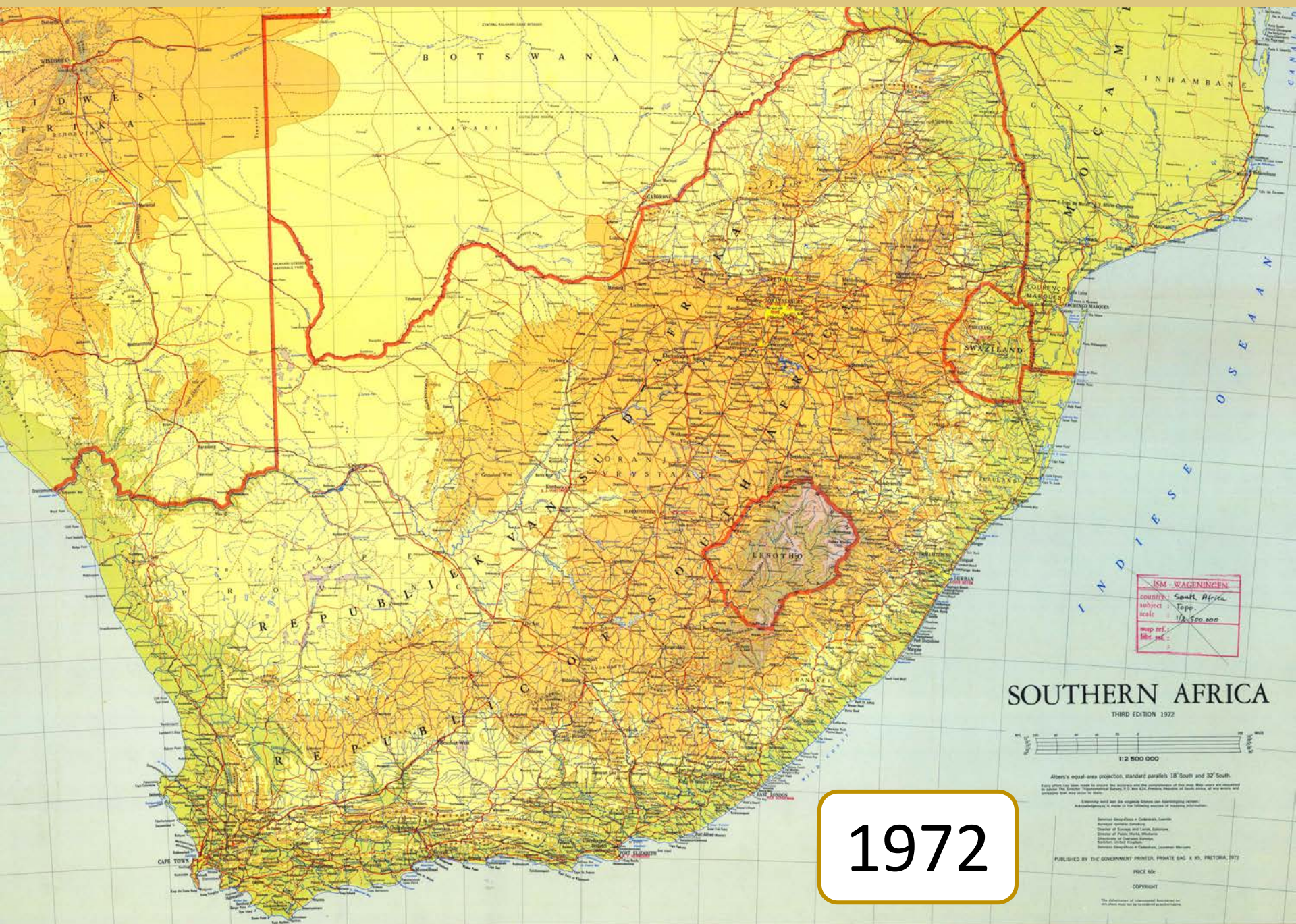
1879



1885







ISM - WAGeningen
country: South Africa
subject: Topo
scale: 1:2,500,000
map ref.:
file ref.:

SOUTHERN AFRICA

THIRD EDITION 1972



Atmospheric refraction, projection, standard parallels 18° South and 32° South
Every effort has been made to ensure the accuracy and the completeness of this map. Map users are requested to advise the Director, Topographical Survey, 11, de Willems Road, Pretoria, of any errors and omissions that may occur in this map.

Mapmaking and map data are copyright material. No part of this map may be reproduced without the written permission of the Director, Topographical Survey, 11, de Willems Road, Pretoria.

PUBLISHED BY THE GOVERNMENT PRINTER, PRIVATE BAG X 95, PRETORIA, 1972

PRICE 50c

COPYRIGHT

The Government of the Republic of South Africa
in the name of the President of the Republic

1972

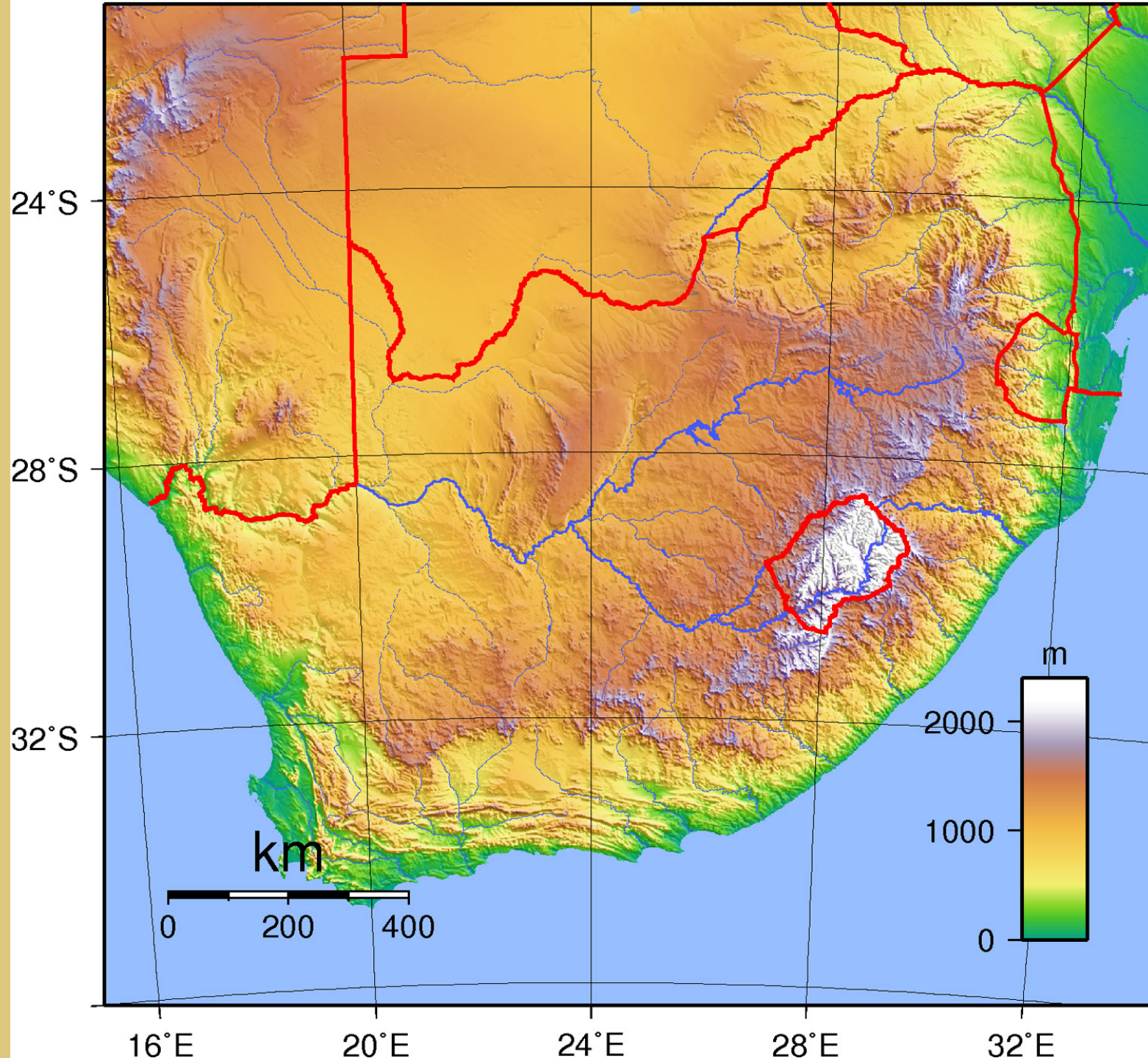
Republic of South Africa



Administrative

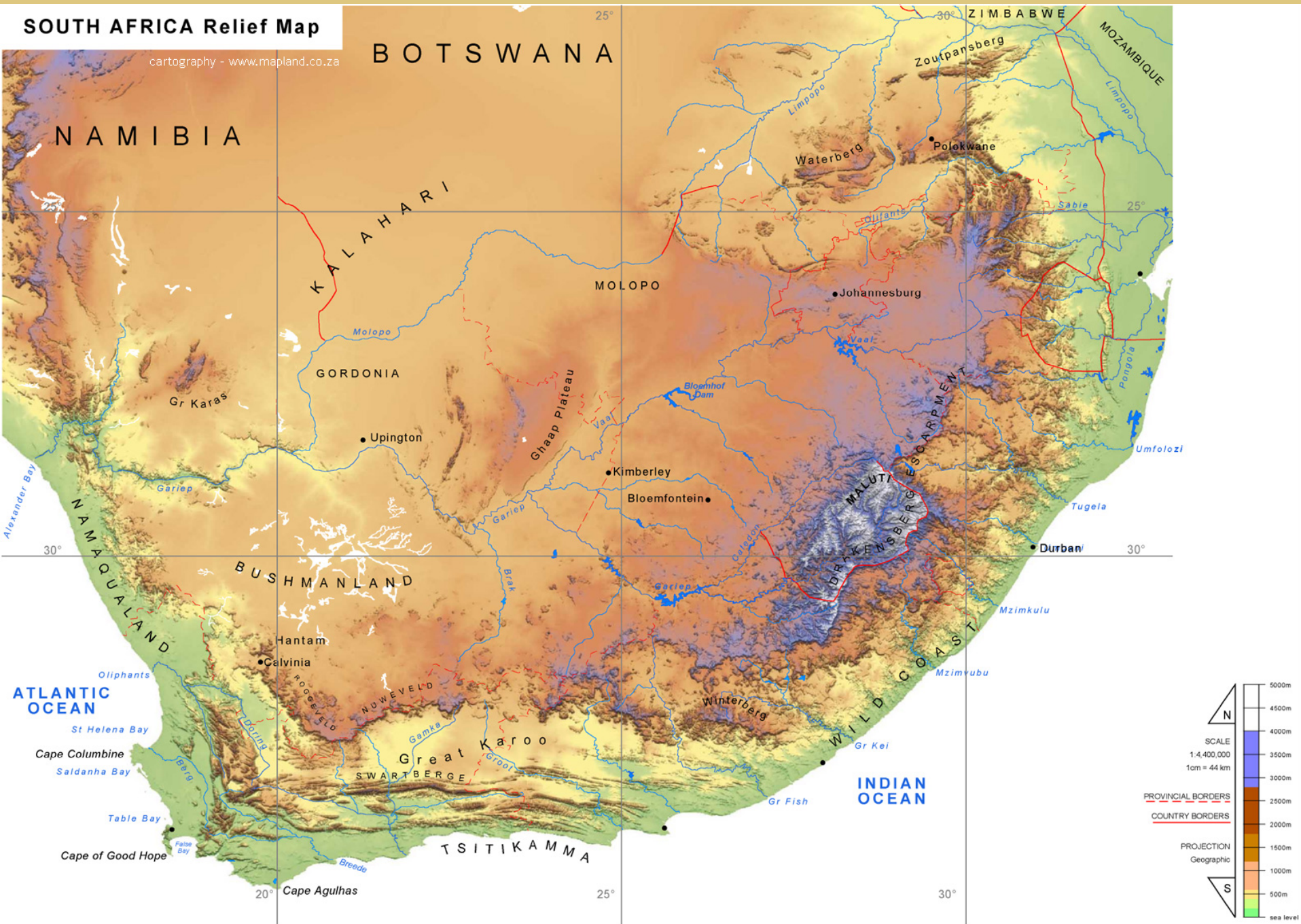


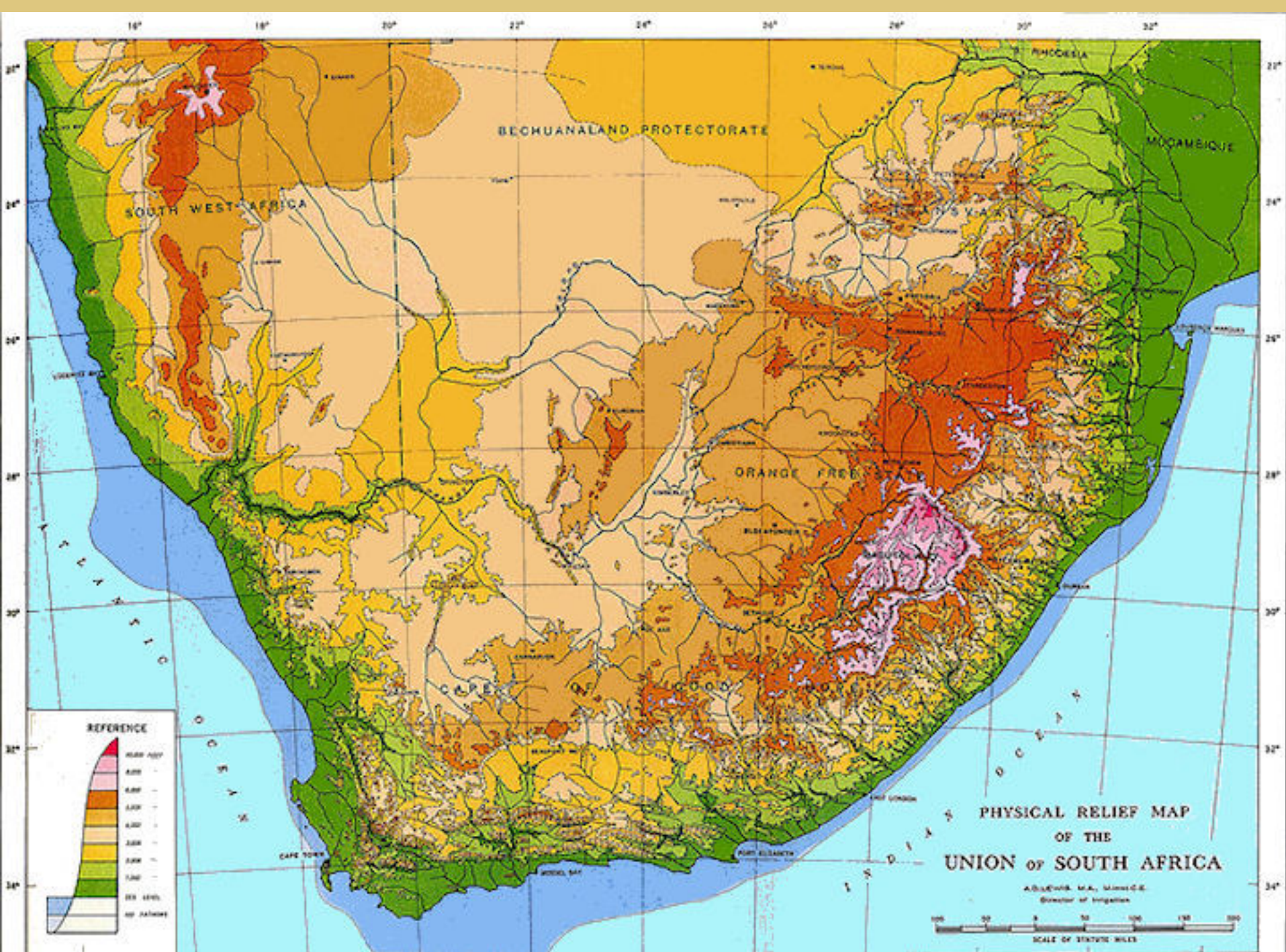




SOUTH AFRICA Relief Map

cartography - www.mapland.co.za





South Africa Road Map





South African
NATIONAL PARKS
www.sanparks.org
+27 (0)12 428 9111

- 1 Addo Elephant National Park
- 2 Agulhas National Park
- 3 Augrabies Falls National Park
- 4 Bontebok National Park
- 5 Camdeboo National Park
- 6 Golden Gate Highlands National Park
- 7 Karoo National Park
- 8 Kgalagadi Transfrontier Park
- 9 Kruger National Park
- 10 Mapungubwe National Park
- 11 Marakele National Park
- 12 Mokala National Park
- 13 Mountain Zebra National Park
- 14 Namaqua National Park
- 15 Table Mountain National Park
- 16 Tankwa Karoo National Park
- 17 Tsitsikamma National Park
- 18 West Coast National Park
- 19 Wilderness National Park
- 20 IA-IJA/Richtersveld Transfrontier Park



www.capenature.co.za
+27 (0)861 CAPENATURE
(227 362 8873)

- 1 Anyberg Nature Reserve
- 2 Assegaibosch Nature Reserve
- 3 Bird Island Nature Reserve
- 4 Boesmansbos Wilderness Area
- 5 Cedarberg Wilderness Area
- 6 De Hoop Nature Reserve
- 7 De Mond Nature Reserve
- 8 Gamkberg Nature Reserve
- 9 Goukamma Nature Reserve
- 10 Grootvadersbosch Nature Reserve
- 11 Groot Winterhoek Wilderness Area
- 12 Hottentots Holland Nature Reserve
- 13 Jonkershoek Nature Reserve
- 14 Keurbooms River Nature Reserve
- 15 Kogelberg Nature Reserve
- 16 Limietberg Nature Reserve
- 17 Marloth Nature Reserve
- 18 Matjesrivier Nature Reserve
- 19 Outeniqua Nature Reserve
- 20 Robberg Nature Reserve
- 21 Rooiberg Nature Reserve
- 22 Swartberg Nature Reserve
- 23 Vrijheid Nature Reserve
- 24 Walker Bay Nature Reserve



WILD CARD National parks, RESERVES and resorts



explore | conserve | enjoy



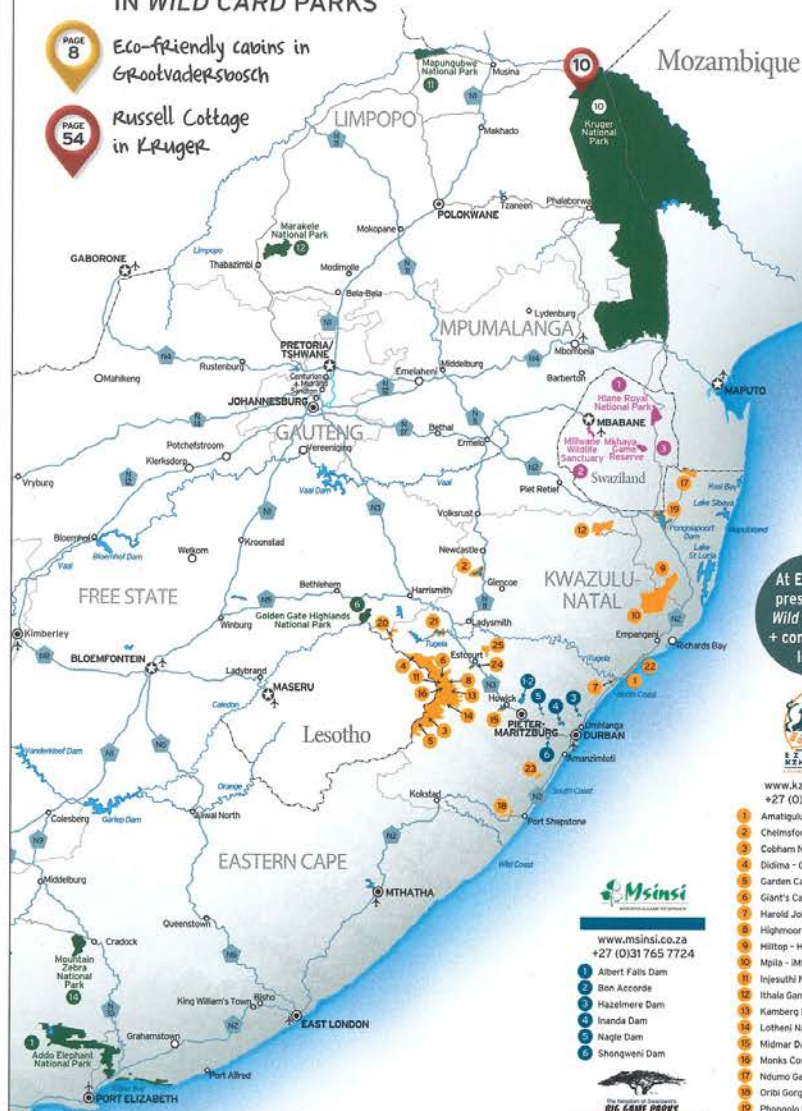
NEW ACCOMMODATION IN WILD CARD PARKS



Eco-friendly cabins in
Grootvadersbosch



Russell Cottage
in Kruger



At Ezemvelo,
present your
Wild Card + ID
+ confirmation
letter.



www.kznwildlife.com

+27 (0)33 845 1000



www.msinsi.co.za
+27 (0)31 765 7724

- 1 Albert Falls Dam
- 2 Bon Accord
- 3 Hazelmere Dam
- 4 Inanda Dam
- 5 Nagle Dam
- 6 Shongweni Dam



www.biggameparks.org

+268 2528 3943 / 4

- 1 Hlane Royal National Park
- 2 Millwane Wildlife Sanctuary
- 3 Mkhaya Game Reserve

- 1 Amatigulu Nature Reserve
- 2 Chelmsford Dam Nature Reserve
- 3 Cobham Nature Reserve
- 4 Didima - Cathedral Peak
- 5 Garden Castle Nature Reserve
- 6 Giant's Castle Nature Reserve
- 7 Harold Johnson Nature Reserve
- 8 Highmoor Nature Reserve
- 9 Hilltop - Hluhluwe Game Reserve
- 10 Mpi - Mfolozi Game Reserve
- 11 Injushu Nature Reserve
- 12 Ithala Game Reserve
- 13 Kambing Nature Reserve
- 14 Loteni Nature Reserve
- 15 Midmar Dam Nature Reserve
- 16 Monks Cowl Nature Reserve
- 17 Ndumo Game Reserve
- 18 Oribi Gorge Nature Reserve
- 19 Phongolo Nature Reserve
- 20 Royal Natal National Park
- 21 Spioenkop Dam Nature Reserve
- 22 Umlalazi Nature Reserve
- 23 Vernon Crookes Nature Reserve
- 24 Wagendrift Dam Nature Reserve
- 25 Weenen Game Reserve

0861 GO WILD (46 9453)
wildcard@sanparks.org
International: +27 861 46 9453 | Fax: 086 502 6704



South African
NATIONAL PARKS
www.sanparks.org
+27 (0)12 428 9111
+27(0)12-233-9111



www.wildcard.co.za

Call us on:
0861 GO WILD (46 9453) or
Fax: +27 (0) 12 426 5480 or
E-mail: wildcard@sanparks.org

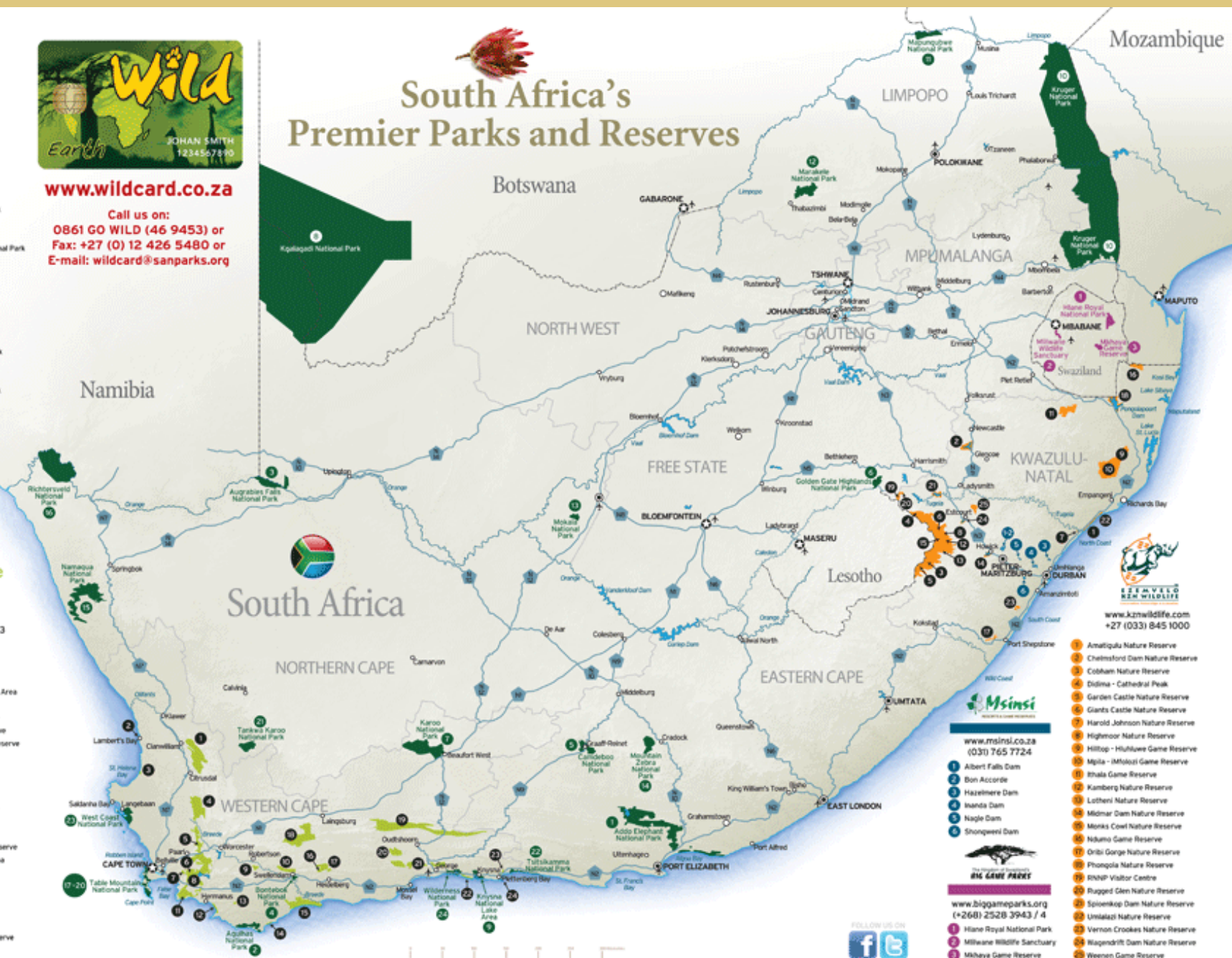
- 1 Addo Elephant National Park
- 2 Agulhas National Park
- 3 Augrabies Falls National Park
- 4 Bontebok National Park
- 5 Camdeboo National Park
- 6 Golden Gate Highlands National Park
- 7 Karoo National Park
- 8 Kgalagadi National Park
- 9 Krivona National Lake Area
- 10 Kruger National Park
- 11 Mapungubwe National Park
- 12 Marakele National Park
- 13 Mokala National Park
- 14 Mountain Zebra National Park
- 15 Namaqua National Park
- 16 Richtersveld National Park
- 17 Table Mountain National Park
- 18 Boulders (TMNP)
- 19 Cape Point (TMNP)
- 20 Oudekraal (TMNP)
- 21 Silvermine (TMNP)
- 22 Tankwa Karoo National Park
- 23 Tsitsikamma National Park
- 24 West Coast National Park
- 25 Wilderness National Park



www.capenature.co.za
0861 CAPENATURE
(227 362 8873)
0027 861 227 362 8873
(012) 362 8873

- 1 Cedarberg Wilderness Area
- 2 Bird Island Nature Reserve
- 3 Rocherpan Nature Reserve
- 4 Groot Winterhoek Wilderness Area
- 5 Limietberg Nature Reserve
- 6 Jonkershoek Nature Reserve
- 7 Assepoort Nature Reserve
- 8 Hottentots Holland Nature Reserve
- 9 Vrolijkheid Nature Reserve
- 10 Marloth Nature Reserve
- 11 Kogelberg Nature Reserve
- 12 Walker Bay Nature Reserve
- 13 Salomonstad Nature Reserve
- 14 De Mond Nature Reserve
- 15 De Hoop Nature Reserve
- 16 Groenvaldsbosch Nature Reserve
- 17 Boosmansbos Wilderness Area
- 18 Anyberg Nature Reserve
- 19 Swartberg Nature Reserve
- 20 Gamkaberg Nature Reserve
- 21 Outeniqua Nature Reserve
- 22 Goukamma Nature Reserve
- 23 Kaurboom Ower Nature Reserve
- 24 Robberg Nature Reserve

South Africa's Premier Parks and Reserves



www.msinsi.co.za
(031) 765 7724

- 1 Albert Falls Dam
- 2 Bon Accord
- 3 Hazelmere Dam
- 4 Inanda Dam
- 5 Nagle Dam
- 6 Shongweni Dam



www.biggameparks.org
(+261) 2528 3943 / 4

- 1 Hlane Royal National Park
- 2 Milwane Wildlife Sanctuary
- 3 Mkhaya Game Reserve

- 1 Amatigulu Nature Reserve
- 2 Chelmsford Dam Nature Reserve
- 3 Cobham Nature Reserve
- 4 Dilsda - Cathedral Peak
- 5 Garden Castle Nature Reserve
- 6 Grants Castle Nature Reserve
- 7 Harold Johnson Nature Reserve
- 8 Highmoor Nature Reserve
- 9 Hilltop - Hluhluwe Game Reserve
- 10 Mlila - IMfolosi Game Reserve
- 11 Ithala Game Reserve
- 12 Kambing Nature Reserve
- 13 Luthuli Nature Reserve
- 14 Midmar Dam Nature Reserve
- 15 Monks Cowl Nature Reserve
- 16 Ndumu Game Reserve
- 17 Onibi Gorge Nature Reserve
- 18 Phongola Nature Reserve
- 19 RINP Visitor Centre
- 20 Rugged Glen Nature Reserve
- 21 Spionkop Dam Nature Reserve
- 22 Umalazi Nature Reserve
- 23 Vernon Crookes Nature Reserve
- 24 Wapendrift Dam Nature Reserve
- 25 Weenen Game Reserve



ADDO ELEPHANT NATIONAL PARK

Main Map

South African
NATIONAL PARKS



Understand the complexity and diversity of our beautiful Park!



Experiences makes Memories!

Any feedback on the map will be appreciated,
email any suggestions to: henriette.engelbrecht@sanparks.org

Don't miss out on Activities!



- 1. Darlington Area:**
 - 4x4 Trail (bookings done at Addo Main Camp reception)
 - Fishing in Darlington Dam
 - Accommodation: basic, Camping facilities (bookings done at Addo Main Camp reception)
 - Birding: A birding enthusiast's paradise, specialise include and Karoo species and water birds.
- 2. Kabouga Area:**
 - 4x4 Trail (bookings done at Addo Main Camp reception)
 - Accommodation: Mvubu Campsite - a rustic campsite alongside the river.
 - Kabouga Cottage - high clearance vehicle required to access the cottage (bookings done at Addo Main Camp reception)
 - Birding: A birding enthusiast's paradise, specialise include and Karoo species and water birds.
- 3. Zuurberg Area:**
 - Guided Horse Trails, including an overnight horse trail to Narina Bush Camp
 - Birding: A birding enthusiast's paradise, look for grassland forest and fynbos species.
 - Accommodation: Narina Bush Camp.
- 4. Nyathi Area:**
 - Self catering, fully equipped family cottages.
 - Located along a magnificent, breathtaking views of elephant and buffalo at the waterhole.
 - Small private Nyathi pool.
 - Birding: A birding enthusiast's paradise, look for thicker and grassland species.
- 5. Addo Main Camp Area:**
 - Guided Game Drives (enquiries & bookings done at Game Drives Office)
 - Self Drives in the Wildlife area
 - Guided Horse Trails (enquiries & bookings done at Game Drives Office)
 - Birding: A birding enthusiast's paradise, look for thicker and grassland species.
 - PFC Discovery Trail (Wheelchair friendly)
 - Underground viewing hole (a waterhole opposite the restaurant)
 - Picnic & braai sites in the wildlife area and opposite the restaurant
 - Ulwazi Interpretive Centre.
 - Shop that sells curio and basic commodities.
 - Restaurants
 - Fuel station
 - Public Accommodation (self-catering): Camping & Caravan sites, Safari tents, Randwells (with a view of the waterhole), Forest Cabins, Chalets, Cottages, Hapies & Dinning Guest Houses and Spekboom Tented Camp.
- 6. Colchester Area:**
 - Game viewing in your own vehicle
 - Birding: A birding enthusiast's paradise, look for thicker and grassland species.
 - Accommodation: 12 Thatched Cottages, self-catering
 - Shop, restaurants and fuel available at Colchester Village
 - within 5 km of the camp
 - Fishing, jogging, cycling and ferry trips are offered in the Colchester area. Enquire at reception for more information.
- 7. Woody Cape Area:**
 - Langebos Farm provide a base camp for the hike and are equipped with beds and mattresses, gas fridge & stove, hot water shower, toilet, braai area and cooking & eating utensils.
 - Birding: A birding enthusiast's paradise, look for forest and marine species.

Addo Elephant National Park



Addo Elephant National Park

VISITOR'S MAP



A SUSTAINABLE NATIONAL PARK SYSTEM CONNECTING SOCIETY

PLEASE TAKE NOTE!

All visitors to National Parks are subject to the National Environmental Management Protected Areas Act 57 of 2003 as amended, together with any Regulations and Internal Rules made in terms of this Act:

- WARNING:** You may not climb out nor hang out of your vehicle in the game viewing area.
- Getting out of your vehicle is only allowed in the designated areas indicated by signage, and then only at your own risk as there are dangerous animals.
- You may only drive on tourist roads.
- Do not enter a road that has a NO ENTRY sign or that is not indicated on the map.
- SPEED LIMIT 40km/h - DO NOT EXCEED THE SPEED LIMIT!**
- You may not injure, feed or disturb any form of wildlife.
- You may not uproot, pick, cut, damage, kill, remove or be in possession of any plant or animal and/or part of a plant or animal material, living or dead, from the Park.
- You may not place any name, letter, figure, symbol, mark or picture on any object.
- You may not be in possession of any poison, explosives or of an unloaded or loaded firearm.
- Do not discard any burning object, including cigarettes, anywhere in the Park - it may cause a fire.
- No loud music / noise allowed in the Park or at picnic sites and swimming pools.
- You may not bring any pets, domestic animal or any other animal into the Park.
- DO NOT LITTER! This is your Park - PLASTIC KILLS!**
- Do not drive or park in such a manner that it is a nuisance, disturbance or an inconvenience to any other person.
- You may not cause any noise that is likely to disturb other people after 21h30 and before 06h00.
- You may not stay overnight at the Park without the knowledge of the Manager.
- Only designated accommodation areas may be used.
- Check closing times of the Park and game viewing area - you may not travel in the Park outside of the stipulated times.
- You may not drive a vehicle in the Park without a valid Driver's licence.
- No motorbikes in the Park.
- The use of drones inside (and over) national parks is strictly prohibited.

RIGHT OF ADMISSION IS RESERVED.

Addo Elephant National Park and South African National Parks accepts no responsibility for any loss, damage to property or injury incurred during your visit.

Addo Elephant National Park

PO Box 52, Addo, 6105

Tel: +27 (0)42 233 8600

Fax: +27 (0)42-233 8643

E-mail: addeoqueries@sanparks.org

SANParks - Addo Elephant National Park

www.addoelephantpark.com



084 120 WILD (44 9432)

www.sanparks.org

FREE ENTRY
for a year
for Wild Card
members

For easy booking, book online!
www.sanparks.org

Conservation: 079 618 3556 • Tourism: 082 471 0267

Animal Sightings Game:

- The first person in the car to spot a new animal on the list receives a bonus ten point!
- Each person to spot an animal from the list wins that number of points.
- The person with the highest points total wins!



The leader of the group should buy the winner an ice cream!

PLAYER 1	PLAYER 2	PLAYER 3	PLAYER 4

--	--	--	--

--	--	--	--

--	--	--	--

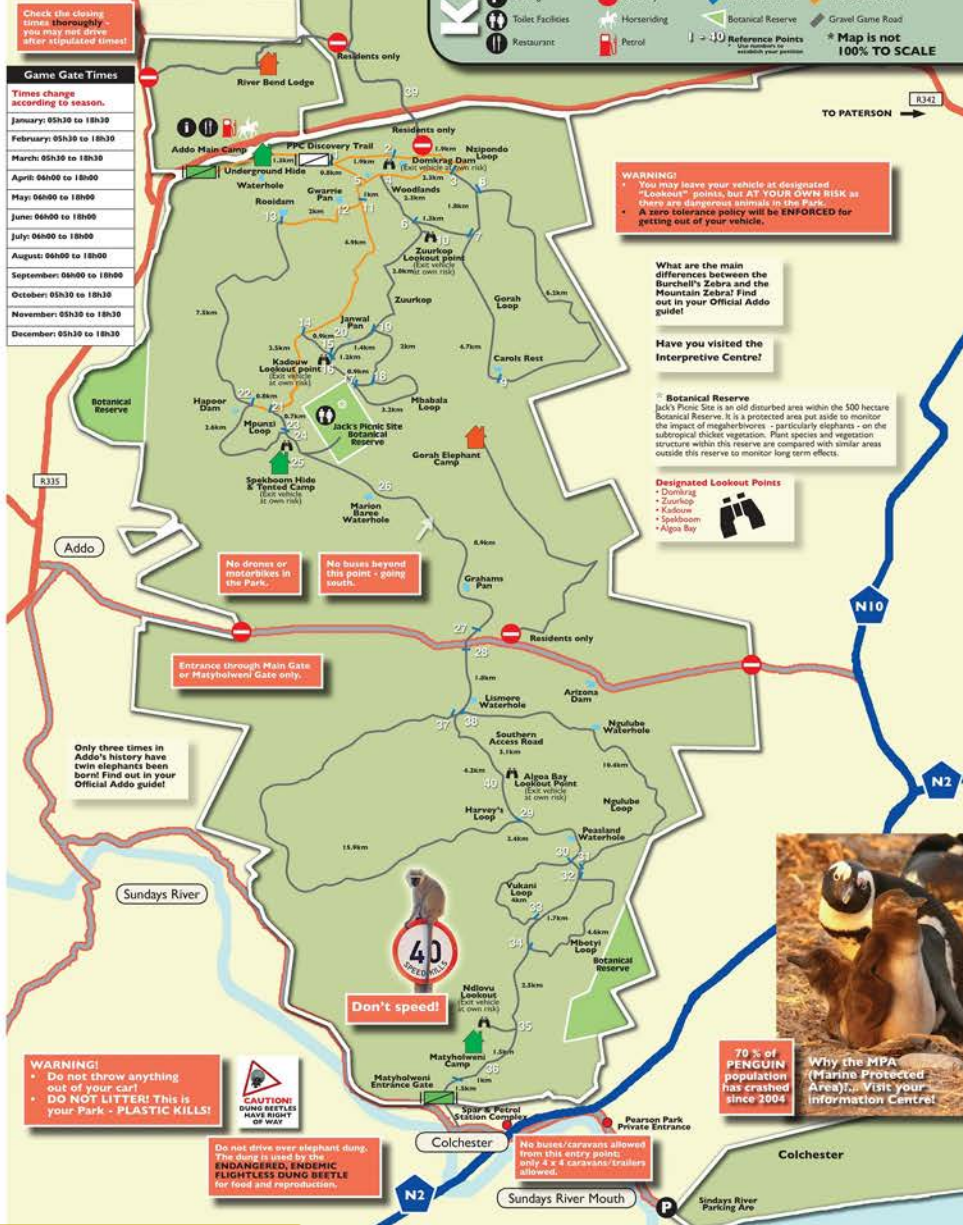
--	--	--	--

--	--	--	--

--	--	--	--

--	--	--	--

MAIN GAME VIEWING AREA



Addo Elephant National Park

Hluhluwe- Imfolozi Park



South Africa

Hluhluwe & Imfolozi Rivers

Legend

□ HiP boundary

— Rivers

Elevation (m a.s.l.)

■ < 250

■ 250–750

■ 750–1,250

□ > 1,250

Pongola River

Hluhluwe River

Black Umfolozi
River

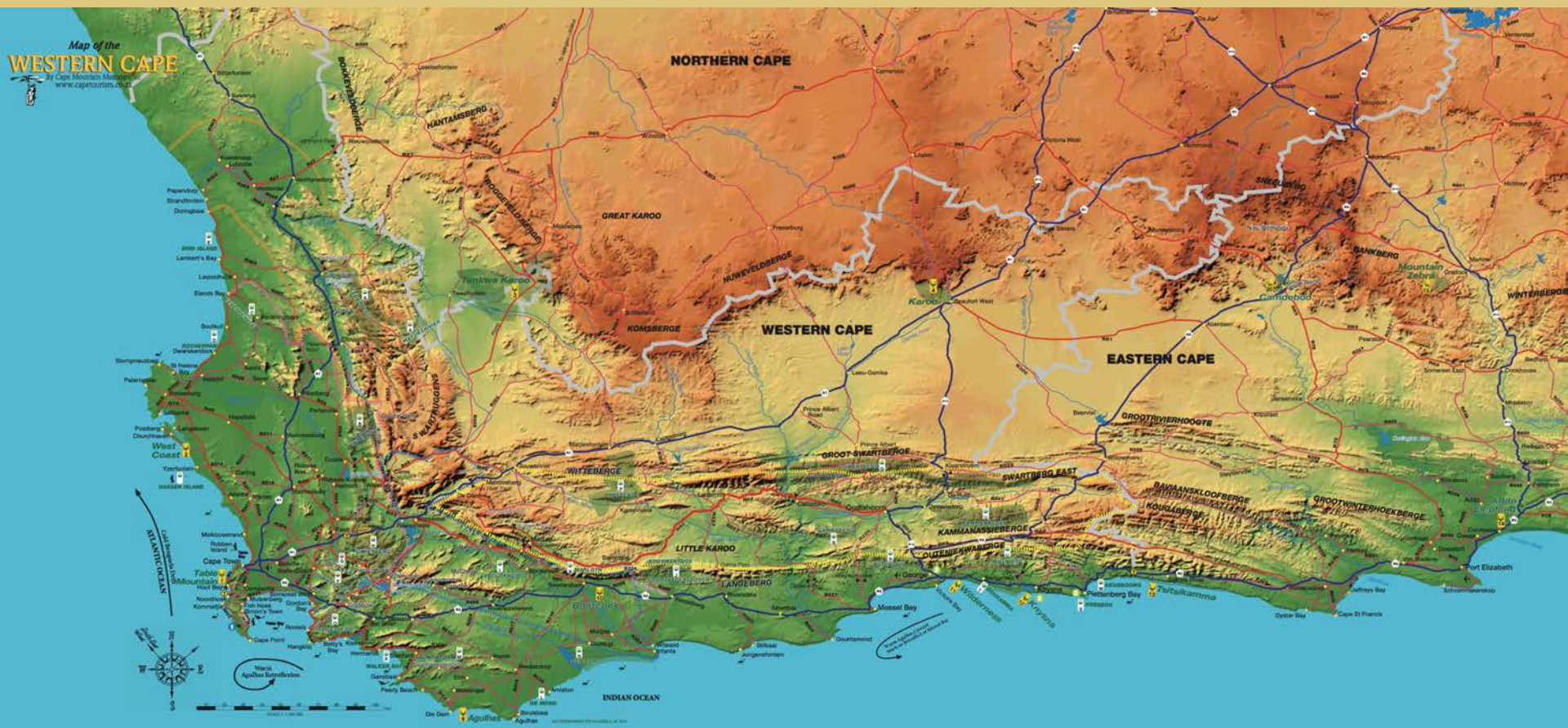
White Umfolozi
River

Tugela River



0 25 50 100

Kilometres



Western Cape Province

www.StevenAndrewMartin.com

Education and Learning

Intended for educational purposes only